

AGENDA

Meeting: Royal Wootton Bassett and Cricklade Area Board
Place: Lyneham Primary School, Preston Lane, Lyneham, SN15 4QJ
Date: Wednesday 26 September 2018
Time: 6:00pm for a 7:00pm meeting start

There are currently extensive building works taking place at Lyneham Primary School. The school is open as normal, however please follow instructions for parking on the night.

Including the Parishes of Braydon, Broad Town, Clyffe Pypard, Cricklade, Latton, Lydiard Millicent, Lydiard Tregoz, Lyneham & Bradenstoke, Marston Meysey, Purton, Tockenham and Royal Wootton Bassett.

The Area Board welcomes and invites contributions from members of the public. The chairman will try to ensure that everyone who wishes to speak will have the opportunity to do so.

If you have any requirements that would make your attendance at the meeting easier, please contact your Democratic Services Officer.

Refreshments and networking opportunity from 6:00pm

Please direct any enquiries on this Agenda to Kevin Fielding (Democratic Services Officer), direct line 01249 706612 or email kevin.fielding@wiltshire.gov.uk

All the papers connected with this meeting are available on the Council's website at www.wiltshire.gov.uk

Press enquiries to Communications on direct lines (01225) 713114 / 713115

Wiltshire Councillors

Cllr Allison Bucknell, Lyneham
Cllr Mollie Groom, Royal Wootton Bassett East
Cllr Mary Champion, Royal Wootton Bassett North
Cllr Jacqui Lay, Purton
Cllr Chris Hurst, Royal Wootton Bassett South
Cllr Bob Jones MBE, Cricklade and Latton

RECORDING AND BROADCASTING NOTIFICATION

Wiltshire Council may record this meeting for live and/or subsequent broadcast on the Council's website at <http://www.wiltshire.public-i.tv>. At the start of the meeting, the Chairman will confirm if all or part of the meeting is being recorded. The images and sound recordings may also be used for training purposes within the Council.

By entering the meeting room you are consenting to being recorded and to the use of those images and recordings for broadcasting and/or training purposes.

The meeting may also be recorded by the press or members of the public.

Any person or organisation choosing to film, record or broadcast any meeting of the Council, its Cabinet or committees is responsible for any claims or other liability resulting from them so doing and by choosing to film, record or broadcast proceedings they accept that they are required to indemnify the Council, its members and officers in relation to any such claims or liabilities.

Details of the Council's Guidance on the Recording and Webcasting of Meetings is available on request.

Items to be considered	Time
<p><u>Networking Session</u></p> <p>Caroline Gray, Community Banker for Natwest, will be available to provide information about how to avoid scams, how to become financially fitter and the community banking service in Royal Wootton Bassett library.</p>	6:00pm
<p>1 Chairman's Welcome and Introductions</p>	7:00pm
<p>2 Apologies for Absence</p>	
<p>3 Minutes (Pages 1 - 8)</p> <p>To approve the minutes of the meeting held on Wednesday 4 July 2018.</p>	
<p>4 Declarations of Interest</p> <p>To receive any declarations of disclosable interests or dispensations granted by the Standards Committee.</p>	
<p>5 Wiltshire - The Wider Picture (Pages 9 - 18)</p> <p>News and information on what's going on in your local community and across the county:</p> <ul style="list-style-type: none"> • Young Drivers • Electoral Canvass • Local Labour Market • Electoral Review • Animal Licensing 	
<p>6 Strengthening our Communities (Pages 19 - 42)</p> <p>An introduction to the role of the Wiltshire Council highways team.</p> <p>Adrian Hampton (Head of Local Highways - South) and Bill Parks (Head of Local Highways - North) will cover:</p> <ul style="list-style-type: none"> • Maintenance of roads and the costs of repair 	

- Prioritisation of highway repairs
- Road safety improvements and the Community Area Transport Group process (CATG)
- Responsibilities relating to local highways.

Cllr Bridget Wayman - Cabinet Member for Highways, Transport and Waste will be in attendance to help answer any of your highways queries. Questions to be submitted in advance (at the earliest opportunity) to alexa.davies@wiltshire.gov.uk, 01249 706610.

Cllr Jacqui Lay will provide information about the Lorry Watch Scheme.

CEM update from Alexa Davies (please find report attached with JSA updates).

Grant Funding

Broad Town Parish Council (deferred): Area Board Grant no 2866
http://services.wiltshire.gov.uk/areaboardgrants/grant_detail.php?gid=2866

Tockenham Village Hall Storage: Area Board Grant no 3003
http://services.wiltshire.gov.uk/areaboardgrants/grant_detail.php?gid=3003

Broad Town Village Hall Refurbishment: Area Board Grant no 2998
http://services.wiltshire.gov.uk/areaboardgrants/grant_detail.php?gid=2998

Lyneham Primary Forest School Area: Area Board Grant no 2991
http://services.wiltshire.gov.uk/areaboardgrants/grant_detail.php?gid=2991

Lydiard Millicent Parish Council Pathways improvement grant: Area Board Grant no 2979
http://services.wiltshire.gov.uk/areaboardgrants/grant_detail.php?gid=2979

Tinkers Lane Surgery/RWB Leg Club: Area Board Grant no 2969
http://services.wiltshire.gov.uk/areaboardgrants/grant_detail.php?gid=2969

[d=2969](#)

Marston Meysey Parish Council: Area Board Grant no 2925
http://services.wiltshire.gov.uk/areaboardgrants/grant_detail.php?gid=2925

North Wilts Woodturners Association: Area Board Grant no 2901
http://services.wiltshire.gov.uk/areaboardgrants/grant_detail.php?gid=2901

Area Board Initiatives:

Cllr Mary Champion, seeking £1,500 for support for the Royal Wootton Bassett Local Youth Network (please see separate report).

Wiltshire Walking Project, seeking a £1,000 contribution towards developing a mobile device application for local walks, in partnership with Ramblers GB (please see separate report).

To note:

Pay increase made to Health and Wellbeing Champion, Ellen Blacker under delegated authority from £15.00 to £17.50 per hour, in line with the arrangement in Malmesbury.

7 **Spotlight on Parishes and Partners** *(Pages 43 - 68)*

To receive updates from our key partners, including:

- Wiltshire Police - written
- Dorset and Wiltshire Fire & Rescue Service
- Greensquare
- CMAS
- NHS Wiltshire - written
- Healthwatch Wiltshire - written
- Recycle for Wiltshire
- Parish and Town Councils

8 **Task Group Reports and Decisions** *(Pages 69 - 92)*

To consider reports from the following task groups and make any necessary decisions:

- Community Area Transport Group (report attached)

Recommendation:

That the Area Board writes to Bridget Wayman reference the state of the pavements in the Community Area and the lack of budget to repair them.

- Wiltshire Wildlife Trust

9 **Wrap Up**

Thank you for attending this evening.

8:30pm

MINUTES

Meeting: ROYAL WOOTTON BASSETT AND CRICKLADE AREA BOARD
Place: Cricklade Town Hall, 113 High St, Cricklade, SN6 6AE
Date: 4 July 2018
Start Time: 6.00 pm
Finish Time: 9.05 pm

Please direct any enquiries on these minutes to:

Kevin Fielding, direct line 01249 706612 or e-mail kevin.fielding@wiltshire.gov.uk

Papers available on the Wiltshire Council website at www.wiltshire.gov.uk

In Attendance:

Wiltshire Councillors

Cllr Allison Bucknell, Cllr Mollie Groom, Cllr Jacqui Lay, Cllr Chris Hurst and
Cllr Bob Jones MBE

Wiltshire Council Officers

Alexa Davies – Community Engagement Manger
Kev Fielding – Democratic Services Officer
Sally Maynard-Smith – Health Trainer

Town and Parish Clerks/Councillors

Cricklade Town Council – Mark Clarke & John Coole
Lydiard Millicent Parish Council – Mike Sharp Purton Parish Council – Ray Thomas
Royal Wootton Bassett Town Council – Sue Hughes

Partners

Wiltshire Police – Steve Carroll
Dorset & Wiltshire Fire and Rescue Service – Pete Price
Healthwatch Wiltshire – Julie Brown
Wiltshire CCG – Jo Cullen
RWB Arts Festival – John Davies

Total in attendance: 38

<u>Agenda Item No.</u>	<u>Summary of Issues Discussed and Decision</u>
68	<p><u>Appointments</u></p> <p>Cllr Allison Bucknell was elected Chairman of the Royal Wootton Bassett and Cricklade Area Board 2018/19.</p> <p>Cllr Bob Jones was elected Vice-Chairman of the Royal Wootton Bassett and Cricklade Area Board 2018/19.</p> <p>Appointments to Outside Bodies and Working Groups.</p> <p>The following appointments to outside bodies and working groups for the forthcoming year were made:</p> <ul style="list-style-type: none"> • Community Area Transport Group (CAT-G) – All Area Board members • C&DCA (Cricklade Leisure Centre) – Cllr Bob Jones • Community & RAF Fairford Liaison Group - Cllr Bob Jones • Caring for Dementia – Cllr Allison Bucknell & Cllr Mary Champion • Health & Wellbeing Board - Cllr Mary Champion
69	<p><u>Chairman's Welcome, Introductions and Announcements</u></p> <p>The Chairman welcomed everyone to the meeting of the Royal Wootton Bassett & Cricklade Area Board and introduced the councillors and officers present.</p> <p>The Chairman advised that Cllr Simon Billis – Broad Town Parish Council had sadly passed away. Condolences were passed on to his family from the Area Board.</p>
70	<p><u>Apologies for Absence</u></p> <p>Apologies for absence were received from Cllr Mary Champion and Sheila Dunn – RWB Memorial Hall.</p>
71	<p><u>Minutes</u></p> <p>Decision</p>

	<ul style="list-style-type: none"> • The minutes of the meeting held on Wednesday 9 May 2018 were agreed a correct record and signed by the Chairman.
72	<p><u>Declarations of Interest</u></p> <p>There were no declarations of interest</p>
73	<p><u>Wiltshire - The Wider Picture</u></p> <p>There following Chairman's Announcements contained in the agenda pack was noted:</p> <ul style="list-style-type: none"> • UK Youth Parliament Elections and Activity
74	<p><u>Strengthening our Communities</u></p> <p>How to get the best out of your NHS</p> <p>Dr Richard Sandford-Hill - GP Chair Wiltshire CCG and Jo Cullen, Director of Primary and Urgent Care gave a short presentation that highlighted what the CCG exactly was, the different types of health care available and who was responsible for them.</p> <p>Points made included:</p> <p>What was a CCG</p> <ul style="list-style-type: none"> • Clinical Commissioning Group – born of the 2012 Health Act (the Lansley Reforms) • Were designed to move away from 'bureaucratic leadership' • Were clinically-led membership organisations: GP practices were all members, far more of a say, eg Chairman was a GP • Hospital Doctor and Director of Nursing on Governing Body • That the CCG held pot of NHS money for Wiltshire and 'buy' (commission) healthcare for the population • Money comes from Treasury to NHS England to CCGs • Work with Wiltshire Council Public Health team to understand Wiltshire people's health needs, to work out priorities and how to get most value for largest number of people from our budget.

- 'Buy' quantities of operations, interventions, treatments etc from 3 x hospitals, 1x mental health trust, 1 x community provider, 1 x children's community provider, 1 x ambulance trust, 1 x out of hours provider, 49 x GP practices.
- CCGs 'assessed' against national and local targets set by NHS England, CQC etc. Quarterly meetings, rankings etc.
- That local surgeries were struggling to recruit GPs particularly in rural locations.
- That there were not enough GPs to cover the Lyneham and the MOD Lyneham site.

Councillor Jerry Wickham - Cabinet Member for Adult Social Care Public Health and Public Protection, Wiltshire Council gave a short presentation that highlighted public health and the community.

Points made included:

- The importance of an healthy life style.
- The importance of Enablement – giving older people quality care from the outset.
- Local Area Coordinators – preventing need, reducing need, delaying need and managing need.
- The importance of Health & Wellbeing as part of the Wiltshire Council Core Strategy.

Sally Maynard-Smith - health trainer, Wiltshire Council gave a short presentation that outlined what could you do to improve your own health outcomes and those of loved ones.

Points made included:

- That Health Trainers work on a one to one basis to support behaviour change and improve health.
- They concentrate on behaviours associated with ill health including unhealthy eating often linked to obesity, stop or reduce smoking, sensible drinking, increasing physical activity, building confidence and motivation

to change and boosting self-esteem.

- They can also signpost and support clients to access other services and activities where appropriate.
- That the service was open to anyone over the age of 18 years of age and, could be accessed by appointment in a variety public venues in Wiltshire such as libraries and leisure centres.
- Health Trainers worked with their clients for six sessions, building motivation and confidence to enable the client to help themselves and maintain the changes.

Alexa Davies - community engagement manager gave a brief update on the health and wellbeing group - a local network connecting care-co-ordinators from the GP surgeries, local organisations and community groups with a health focus and Elaine Blacker - health and wellbeing champion, to share information, best practice and events and new projects coming up.

Charlotte Gorman - Practice Manager at Tinkers Lane Surgery gave a short presentation that outlined how could you get involved and support your local surgery.

Points made included:

- The need to improve GP resilience.
- The need to try and reduce the workloads of our GPs.
- That many surgery users had made, or were making poor life style choices which was impacting on the workloads of GPs.
- That a Royal Wootton Bassett Leg Club would be starting on the beginning of September 2018, this was a good way of making contact with socially isolated residents with leg issues.
- That volunteers were sought to help out at the Leg Club.

Julie Brown - Healthwatch Wiltshire gave a short presentation to highlight the work of Heathwatch Wiltshire.

Points made included:

- Healthwatch were the independent champion for people using local

health and social care services in Wiltshire. They listen to what people like about services and what could be improved and share their views with those with the power to make change happen. They also share them with Healthwatch England, the national body, to help improve the quality of services across the country.

- The sole purpose was to help make care better for people. There was a local Healthwatch in every area of England.
- The Healthwatch Wiltshire service was delivered by Help and Care. They were a charity founded in 1985 in Bournemouth who now work across south-central England. They were involved in the delivery of 8 local Healthwatch services.
- Around 50 dedicated volunteers who support Healthwatch Wiltshire to talk to local people.
- Healthwatch Wiltshire record peoples experiences (this can be anonymous). They then work with people in Wiltshire Council, Wiltshire CCG and health and care providers to make sure that local peoples experiences make a difference and that their concerns are addressed.

The Chairman thanked all the presenters for an interesting and informative session.

Grant Funding

The Area Board members were asked to consider one application to the Community Area Grants scheme and one application for youth funding:

Decision

- **Broad Town Parish Council, seeking £794.97 toward new football goals needing replacement.**

Note: It was agreed to defer this application until the September meeting as the applicant was not attendance

Youth Grant Funding

Decision

- **To award CMAS £8,883 for continued funding for work in the community area, as agreed at March 2018 Area Board meeting.**

75	<p><u>Spotlight on Parishes and Partners</u></p> <p>Updates were received from the following Partners, Towns and Parishes:</p> <ul style="list-style-type: none"> • Wiltshire Police - the written report was noted • Dorset and Wiltshire Fire & Rescue Service - the written report was noted • Community Mentoring and Support – the written report was noted • NHS Wiltshire – the written report was noted • Healthwatch Wiltshire – the written report was noted • Royal Wootton Bassett Town Council – the written report was noted • Cricklade Town Council – the written report was noted • Wiltshire Family Learning – the written report was noted • Recycling for Wiltshire Joint Venture – the written report was noted. • Royal Wootton Bassett Local Youth Network – the written report was noted. <p>The Chairman thanked all partners for their updates</p>
76	<p><u>Task Group Reports and Decisions</u></p> <p>The Community Area Transport Group (CAT-G)</p> <ul style="list-style-type: none"> • The report dated 6 June 2018 was noted. • Substantive Highways Scheme - Tockenham (5892) and Purton (4458) – funding agreed • Next meeting Wednesday 12 September 2018. <p>Wiltshire Wildlife Trust</p> <ul style="list-style-type: none"> • The written report was noted.
77	<p><u>Wrap Up</u></p> <p>The Chairman thanked everybody for attending the meeting.</p>

Car Drivers 25 & UNDER!



Official Provider

YOUNG DRIVER INITIATIVE

Are you aged 25 and under?

Would you like to gain Advanced Driving Skills similar to Police Standards?

Our courses offer to Help, Guide and Assist you to reach an Advanced Standard! Become more aware and enjoy your driving more with 1 to 1 Training.

As well as gaining recognition for your skills, once you're qualified you'll become a full **iamRoadSmart** member and you can often receive other benefits as a result. Also looks good on your CV!

Full cost of the whole course is £149

(Inclusive of: Course Material – Group Membership for 1 year **iamRoadSmart** Membership for 1 year and Test Fee).

If you are **aged 25 and under**, and take the test and pass, we will **refund £50** of your fee to you! (**Applies to Swindon Group only – A few places left!**)

So that is a 'Full Advanced Course including Test Fee for £99' !!!!!!!

Swindon Advanced Motorists meet on the First Wednesday of each month at 7.30pm within, Blunsdon House Hotel, Blunsdon, Swindon. SN26 7AS (Except January and August).

What have you got to lose? We offer a 'Free Taster Session'! Parents are welcome to accompany us and see what we offer

Contact: *Chris Gleed* on 01793-772314 for more information.

Or view: www.iamroadsmart.com 'Groups' Section

You can also go 'Online' to book a 'Free Taster Session' in your own car.

E-Mail: Swindongroup@hotmail.com

We are a 'Charity', not a 'Profit Making' Organisation!

Chairman's Announcements

Subject:	Council urges electronic answer to electoral roll inquiries
Web contact:	http://www.wiltshire.gov.uk/elections-register-to-vote

Between August and November 2018, we will be sending out around 220,000 Household Enquiry Form (HEF) one to every residential property in Wiltshire. This form is used to collect information to ensure anyone who is eligible to register at the property is actually registered.

It is a legal requirement to provide the information requested to ensure it is still current and accurate.

It is important that you respond to this form to avoid reminders being sent.

The quick and easy way to respond to your form

Using the security codes printed at the top of your Household Enquiry Form

- Online at: www.householdresponse.com/wiltshire
- Telephone: (Freephone) 0800 197 9871
- Text: NOCHANGE to 80212

If you add anyone to the form they will still need to register individually by going on **www.gov.uk/register-to-vote**. They will need to provide their date of birth and national insurance number to complete their registration.

If you are unable to use the automated options, you can complete and return the form in the envelope provided.

For more information on electoral registration and voting, visit <http://www.wiltshire.gov.uk/elections-register-to-vote>

Electoral Services
Wiltshire Council

Chairman's Announcements

Subject:	Localised Labour Market Intelligence (LMI)
Web contact:	https://workwiltshire.co.uk/

The Employment and Skills service have produced labour market intelligence documents broken down by parliamentary constituencies which are now available to view on the [Work Wiltshire website](https://workwiltshire.co.uk/).

They have been published as easy-to-read, user-friendly documents; providing advice and tips about breaking into a range of industries. Each section has been produced as an infographic which can be used separately from the rest of the document.

The Local Market Intelligence documents offer inside knowledge on trends and facts on the job market so people can understand what types of employment opportunities are around and to help plan for the future.

They include sections on:

- Demographics - who is employed, what type of employment they have, what qualifications residents in the area have and average earnings
- Employment breakdown - industry sectors in your area
- Destinations – highlighting where Key Stage 4 and 5 pupils went after finishing their education
- Local businesses - links to interactive maps showing a selection of local businesses
- Employers in Wiltshire - how firms hire staff in the county
- Apprenticeships vacancies and opportunities
- Future jobs - employment and industry sector projections
- Definitions
- Comparison data

Also available on the website is a separate LMI series focusing in on priority industry sectors in the County, these include:

- Business and finance
- Construction
- Digital and creative
- Agriculture, environmental and animal care
- Health and life sciences
- Manufacturing and engineering

Laura Mayes, Wiltshire Council Cabinet Member for Children, Education and Skills, said: "These documents are a valuable resource, especially for newcomers to employment and training.

"They explain what industry sectors there are in your local area, what qualifications are needed to work in those industries, relevant apprenticeships,

Chairman's Announcements

how they recruit, examples of salaries, growth prospects, masses of information about Wiltshire employers, and where you can study.

"They are incredibly useful in giving young people and the wider public a better understanding of the labour market in their area."

Chairman's Announcements

Subject:	Electoral Review of Wiltshire Council- Update Consultation on New Division Boundaries
Web contact:	committee@wiltshire.gov.uk / https://consultation.lgbce.org.uk/node/14518

The Local Government Boundary Commission for England has decided up on a future council size for Wiltshire Council of 98.

A consultation on a pattern of electoral divisions for that council size will run from 28 August 2019 to 5 November 2019. Any person or organisation can access the consultation portal and respond at this [link](#). If you would like to make a submission please see the link to the briefing note below to assist you.

Any proposals must align as closely as possible to an electorate size of 4291 per division (projected figures for 2024), reflect community identity, and provide convenient and effective local government.

Wiltshire Council will be making a submission on a pattern of divisions, and welcomes any representations from any person or organization to assist it in preparing that submission. Any representations should be sent to committee@wiltshire.gov.uk

For more detailed background information and next steps please see this [briefing note](#).

Chairman's Announcements

Subject:	Animal Licensing
Web contact:	http://www.wiltshire.gov.uk/licences-permits-animal

A new licensing regime for Animal licensing is taking effect from 1 October 2018, with significant implications for Wiltshire Council's Licensing Team and new and existing licence holders

Links to the new regulations and DEFRA guidance documents are available on Wiltshire Council's website

<http://www.wiltshire.gov.uk/licences-permits-animal>

Below is a brief summary of the implications of the new regulations:

The Animal Welfare (Licensing of Activities Involving Animals)(England) Regulations 2018 define the animal based activities that require licences as follows:

- Selling animals as pets (or with a view to their being later resold as pets) in the course of a business including keeping animals in the course of a business with a view to their being so sold or resold.
- Providing or arranging for the provision of accommodation for other people's cats or dogs in the course of a business on any premises where the provision of that accommodation is a purpose of the business. (This includes home boarding)
- Hiring out horses in the course of a business for either riding, instruction in riding, or both.
- Breeding three or more litters of puppies in any 12-month period; or breeding dogs and advertising a business of selling dogs.
- Keeping or training animals for exhibition in the course of a business for educational or entertainment purposes, either to any audience attending in person, or by the recording of visual images of them by any form of technology, or both.

All four existing types of licence, together with the additional activity of keeping and training animals for exhibition, will be encompassed by one new 'Animal Activity licence'. If an applicant is running more than one licensable animal related activity, each activity will be assessed separately and set out in one licence. The length of licence (previously one year in most cases) may be anything between one and three years dependent on the outcome of their inspection, and the type of licence

Local Authorities current arrangements include locally set conditions. The new provisions contain nationally set regulations for each animal based activity, which cannot be changed in any way and form the basis for conditions on the new licences going forward.

The fees are now to be split into two parts – the application fee, payable at the time of submission to cover the Council's costs in considering and determining the application, and the licence fee, which covers ongoing enforcement and compliance requirements. Ahead of the implementation date, revised fees will be set to accommodate the changes.

Chairman's Announcements

Wiltshire currently has 269 licensed animal licensed premises and most licences under the existing legislation with the majority of licences expiring on 31st December 2018.

The Licensing Team are planning to hold information seminars for new applicants and existing licence holders early in October 2018.

Please direct any questions on the new regulations to
Publicprotectionnorth@wiltshire.gov.uk / or 01249 706555



Royal Wootton Bassett and Cricklade Community Identified Priorities Newsletter. September 2018

Children and Young People

RWB and Cricklade Community Area

What has been done so far:

1. A summer holiday programme of sports and activities has been provided for children and young people to help keep them happy and healthy over the summer months.

Fun in the Sun has been delivered in Lyneham and Purton and summer camps, including a basketball camp in Purton and a very successful tennis camp at RWB Academy, have also been available.

2. The leisure team are working with pupils in school years 4 and 5 in select schools on the **Healthy Me Bitesize** programme. Staff will run some interactive 1-hour weekly sessions for a period of 6 weeks. These will be held within the school during curriculum time with a varying level of flexibility. The programme looks to cover a key range of healthy eating topics with the delivery taking a fun and active approach.



3. Date for the diary - **the November Area Board meeting will have a youth theme.** The meeting will take place on Wednesday 21st November at the Memorial Hall, Royal Wootton Bassett.

Community Mentoring And Support (CMAS) provide positive leisure time activities for young people through their Area Board commission in Cricklade, RWB and Lyneham. This includes running a series of local youth groups, doing targeted youth work to address specific issues with the groups, personal development and mentoring for the young people involved.

Funding for their service for young people in the community area has been committed by the Area Board until the end of the financial year (April 2019).

The Area Board councillors and officers continue to work with the RWB Local Youth Network and a developing group in Cricklade to understand the needs of local young people and how resource can best be targeted. If you are developing a youth network in your community, please get in touch if you would like support with this.

Priorities November 2016

1. Mental and emotional health (65.12%)
2. Educational attainment (63.95%)
3. Positive leisure time activities (55.81%)



Royal Wootton Bassett and Cricklade Community Identified Priorities Newsletter. September 2018

Community Safety

RWB and Cricklade Community Area

What has been done so far:

1. Did you know there is a Royal Wootton Bassett Neighbourhood Watch scheme?

The RWB Neighbourhood Watch scheme is managed by co-ordinators who typically cover the road where they live and possibly adjacent roads. They meet three or four times a year, occasionally with a local Police Officer or Police Community Support Officer to learn from the police. Another purpose of the meetings is to receive information about relevant recent 'activities' within RWB and the surrounds and to report and share concerns that residents have brought to attention. These have included cold callers, scammers, burglaries and unusual or suspicious behaviour by unknown individuals with the information passing to and from the police.

Between meetings co-ordinators will disseminate information to scheme members by e-mail or personal contact and have, on occasion, been able to assist the police. Information is also available through Wiltshire and Swindon Community Messaging.

There is considerable scope for residents in all parts of RWB to become involved either as a member or co-ordinator. **Anyone wanting more information or interested in starting a group can contact the Secretary at martinlansdownembe@hotmail.com or 07941420551.**

2. Extra support for car drivers aged 25 and under!

Are you aged 25 and under? Would you like to gain Advanced Driving Skills similar to Police Standards?

Our courses offer to help, guide and assist you to reach an Advanced Standard! Become more aware and enjoy your driving more with 1 to 1 training.

As well as gaining recognition for your skills, once you're qualified you'll become a full iamRoadSmart member and you can often receive other benefits as a result. Also looks good on your CV!

Full cost of the whole course is £149
(Inclusive of: Course Material – Group Membership for 1 year
iamRoadSmart Membership for 1 year and Test Fee).

What have you got to lose? We offer a 'Free Taster Session'! Parents are welcome to accompany us and see what we offer. Contact Chris Gleed on 01793 772314 or Swindongroup@hotmail.com for more information.

Or view: www.iamroadsmart.com where you can book a 'Free Taster Session' in your own car.

3. The Victim Support service is available to support anyone living with domestic abuse, see here for further information: <https://www.victimsupport.org.uk/>

Priorities November 2016

1. Anti-social behaviour (70.59%)
2. Highway safety (63.53%)
3. Domestic violence (50.59%)



Royal Wootton Bassett and Cricklade Community Identified Priorities Newsletter. September 2018

Culture

RWB and Cricklade Community Area

What has been done so far:

1. You are invited to **Music on Your Doorstep in Royal Wootton Bassett!**

On Saturday, October 6, 2018 from 10.00am- 4.00pm at the Memorial Hall, Royal Wootton Bassett.

FREE music-making for all!

Join us for a day of free music workshops, activities and performances, as we celebrate community music-making in Royal Wootton Bassett.

Come and try out our Jam Pod, iPad Station, Instruments and more!

Whats on!

- Mini Musicians - exploratory music session for under 5's and their families.
- Gospel Singing Taster with Jo Sercombe - Love singing? Come and try so accessible gospel singing which is suitable for all ages and abilities.
- West African Drumming with Drum West - Enjoy a lively, loud and complete African experience. Suitable for all ages and abilities.
- Mbira Workshop - Join Chartwell Dutiro for an authentic African Mbira session with singing and much more!

The day will include performances from local groups. To guarantee a space, you can book taster sessions online from the Wiltshire Rural Music website, or just come along on the day - all welcome.

Priorities November 2016

1. Affordable access to cultural activities (73.26%)
2. Library use (58.14%)
3. Diversity and social inclusion (58.14%)



Economy

RWB and Cricklade Community Area



Royal Wootton Bassett and Cricklade Community Identified Priorities Newsletter. September 2018

What has been done so far:

1. The **Work Wiltshire** site is a fantastic resource with information about local apprenticeships and work experience in Wiltshire:

<https://workwiltshire.co.uk/>

Apprenticeship opportunities at Wiltshire Council continue to be promoted via Area Board social media channels. Follow **@RWBandCCEM** (community engagement manager) and **@wilcolyneham** (Chair of the Area Board) on Twitter for updates.

Priorities November 2016

1. Apprenticeship and work experience (71.43%)
2. Training and skills (70.24%)
3. Broadband and digital (52.38%)

2. Use it or lose it - **NatWest community banking service** in RWB library from 10.00am-12 noon!

NatWest has introduced a new role in response to the changing ways customers bank. Community Bankers will work in local communities recently affected by branch closures. As part of their role, they provide customers with personal assistance in accessing the right banking options for their needs across a range of channels. You don't need to bank with NatWest for Caroline to be able to help you and provide advice.

Caroline Gray has been appointed as NatWest Community Bankers for the Melksham, Marlborough and Royal Wootton Bassett region. Caroline will be based in RWB library on a weekly basis on Thursdays from 10am-12noon.



Caroline also offers a range of talks for community groups to help with the prevention of fraud and classes for schools and youth groups to improve money management skills. Caroline can be reached on: caroline.gray@natwest.com or follow Caroline on Twitter **@cgray02**.



Royal Wootton Bassett and Cricklade Community Identified Priorities Newsletter. September 2018

What has been done so far:

1. The amazing work of **Wiltshire Wildlife Trust** continues in the community area. Over the summer a highlight has been their waste free picnics. Wiltshire Waste Watchers had a lovely time with Cricklade residents and Friends of Dance Common at their August picnic. After some tasty wastefree snacks, the group explored Dance Common and found lots of interesting bugs and plants!



Priorities November 2016

1. Fly tipping and litter (74.12%)
2. Improving rights of way (42.35%)
3. Protecting the countryside (36.47%)

For more inspiration, ideas and advice on how to reduce, reuse and recycle, have a look at the Wiltshire Wildlife Trust website and follow the Waste Watchers @SlimBinWilts.

2. Involve Swindon is looking for opportunities!

Could your organisation or group benefit from the help of corporate volunteers? Involve Swindon has many requests from teams looking to help out for a day. It could be help with painting, sorting out stock, outside gardening, etc. A recent example was a team from Arval who helped clear the railway path near Chiseldon.

Many of these teams plan their events several months ahead, so it is not too early to put in requests for help leading up to the Festive period - for example, decorating a Christmas tree and helping with a party for your beneficiaries.

Please contact Sue Dunmore, either by phone (01793 420557) or email (involve@swindonvolunteers.org.uk) to find out more or to submit a request.

3. The Area Board has provided a letter of support for the Morningside Farm meadows project, to help them with fundraising. Objectives of the project are to purchase and protect the meadows as a public nature reserve, improve their condition through favourable management, carry out critical works to enhance public access, provide interpretation and train and equip volunteers and supporters to help survey and manage the site outside RWB.



Royal Wootton Bassett and Cricklade Community Identified Priorities Newsletter. September 2018

Health, Wellbeing and Leisure

RWB and Cricklade Community Area

What has been done so far:

- Age UK run a new Fitness and Friendship group in Royal Wootton Bassett:**

"If sport and physical activity was a drug it would be regarded as a miracle cure".

Dame Sally Davies, Chief Medical Officer for England.

We promote both physical and mental health and wellbeing and support older people to remain independent for longer by helping them to stay fit and active in later life.

A social club for older people with an emphasis on keeping active.

The Fitness and Friendship Club is open to all older people who would like the opportunity to take part in activities and gentle exercise. There is a cost of £4.00 per session. Activities offered include bowling, skittles, kurling (no ice required), quoits and gentle T'ai Chi.

The club is held alternate Thursdays in the Memorial Hall, Station Road, Royal Wootton Bassett, between 10.00am-12 noon. New members are always welcome.

Seated sports with Innov8 Sports is going strong in Royal Wootton Bassett.

This programme is an adapted sports offer for older people, people recovering from an illness or injury or perhaps those who wish to take the first steps towards a healthier lifestyle. All sports and activities take place from a sitting position, allowing participants to take part in a low intensity, highly enjoyable form of physical activity. Sessions take place from 10am on Thursdays at Royal Wootton Bassett Memorial Hall.

Priorities November 2016

1. Mental health (75.29%)
2. Healthy lifestyles (68.24%)
3. Support for carers (61.18%)

INNOV8 SPORTZ
Seated Sports
 New sessions every Fortnight!!
 10am - 11am
 £3 a session
 Traditional sports from a seated position, allowing participants to enjoy low-intensity, physical activity in a fun and social environment.

Dates of Sessions:
 Thursday 21st June
 Thursday 5th & 19th July
 Thursday 9th & 30th August
 Thursday 13th & 27th September
 Thursday 11th & 25th October
 Thursday 8th & 22nd November
 Thursday 6th & 20th December

Royal Wootton Bassett, Memorial Hall, Station Road, Swindon, SN4 8EN
 For further information and to register your place on the programme please contact:
 Josh Lauder: 07854086180 or Email: info.innov8sportz@gmail.com

UK MEMBER Wiltshire Council
 /Innov8Sportz @Innov8Sportz @Innov8Sportz



Royal Wootton Bassett and Cricklade Community Identified Priorities Newsletter. September 2018

Older People

RWB and Cricklade Community Area

1. What has been done so far - this edition we're focusing on dementia, in honour of Dementia Action Week 2018:

The week started with a bang, with a huge **THANK YOU to Debbie Lawrence, Tim Mason and Purton Parish Council**. The stellar team put on an inspiring **Dementia Friendly Communities session**, open to parishes across the county to share their experiences, to inspire and to motivate parishes to do more to become dementia friendly.

Priorities November 2016

1. Social isolation and loneliness (80%)
2. Support for carers (57.65%)
3. Dementia (54.12%)

The Purton team are truly leading the way on this vital piece of work, and we would encourage any parish, community group or individual with a desire to make a difference on this subject to get in touch; alexa.davies@wiltshire.gov.uk.

In support of Dementia Action Week, the Royal Wootton Bassett Caring about Dementia group were also busy! The group here, led by exceptional volunteer Linda Frost, invited 36 people to a very special event which was held at the Manor House Enterprise Centre.

We hosted a Mobile Virtual Dementia Tour Bus which provided an innovative dementia training session giving delegates the opportunity to experience what living with dementia might be like and small ways we can all help those living with dementia and their carers.

The feedback from the delegates was “a feeling of vulnerability, scary, intimidating and confusing” but by having a better understanding of the person with dementia you can change your practice of care to improve their lives.

We hope this event has sparked debate and action to improve support for people living with dementia and their carers.

As a follow up we are arranging Dementia Friends Sessions for companies, organisations, community groups or individuals. The session lasts just 45 minutes and is a simple way to spread awareness and do something which really makes a difference to others. If you would like to book a place please contact Alexa Davies at alexa.davies@wiltshire.gov.uk and we will arrange a mutually convenient time and place, i.e. at your place of work or an agreed venue.

It is only 45 minutes of your time but it could make a huge difference to others.





Royal Wootton Bassett and Cricklade Community Identified Priorities Newsletter. September 2018

Transport

RWB and Cricklade Community Area

What has been done so far:

1. The September Area Board meeting has a transport theme, with experts on hand to provide information and answer your highways related questions. The **Community Area Transport Group** agrees funding for road safety improvements - currently there are 4/5 schemes that CATG can consider at any one time, please see the CATG report in the agenda pack for further information.

Priorities November 2016

1. Road improvement (81.18%)
2. Speeding and road safety (69.41%)
3. Access to public transport (65.88%)

3. The community area is lucky enough to have a **community MPV** which is available for community groups to use free of charge, subject to driver checks and registration. The vehicle is based at Lime Kiln in Royal Wootton Bassett and is already used by the local GP surgeries, Duke of Edinburgh Open Award Centre and the 3M's memory group in Lyneham. Most recently it has been used for transporting people to and from the Bradenstoke Festival. Please contact your Community Engagement Manager, alexa.davies@wiltshire.gov.uk, 01249 706610 if you would like to use this vehicle.



Stagecoach have upgraded their 55 Chippenham to Swindon buses and have re-introduced the 54 bus to West Swindon.

Purton Age Concern now have their new minibus vehicle, with help from the community grant scheme.

Purton and District Age Concern raised £40,000 through fundraisers and appeals to help pensioners get around town. With two buses in operation the charity is back to full strength, allowing residents to zip along to lunches, trips and doctors' appointments when they need. None of the 950 or so people benefitting from the service will be left behind either – the seven-seater vehicle comes complete with disabled access.

President of the charity Tony Price said: "The village is very kind and we're very lucky that we got it. It means people can get out.

"We've got volunteers who are a great asset to the community to give up their time. They really feel for the people they're carrying and form nice relationships with them."



Emblazoned on the new bus are the names of John Blackwell and Joe Ricketts, who were long-time supporters of the service before they died. John used to be in charge of coordinating the drivers while Joe took care of secretarial duties such as insurance.



Royal Wootton Bassett and Cricklade Community Identified Priorities Newsletter. September 2018

Housing

RWB and Cricklade Community Area

What has been done so far:

1. Wiltshire Council is promoting the development of **affordable homes** in the county.

The authority has joined with Wiltshire Community Land Trust (WCLT) and Community First to set up the Wiltshire Community-Led Housing Project. The project's officers provide advice and encouragement to communities aiming to develop affordable homes in their area.

Cllr Richard Clewer, Wiltshire Council's cabinet member for housing, said: "We are seeking out communities who are keen to provide homes for people at affordable prices; to help them start their own CLTs, or explore other ways of providing new affordable homes.

"CLTs are the most common and proven way of delivering local housing schemes that are under the control of the community itself, by buying the freehold or leasehold of a development site.

"Homes provided in this way can be earmarked for local needs and cannot be sold, unless some homes are sold to help create an overall viable scheme.

"The local community does not necessarily have to be the developer and, typically, they will work with a housing association or similar body, such as the council."

There are about 225 CLTs around the country, with numbers rapidly growing in Wiltshire – including projects at Broad Chalke, Wilton, Seend and Cricklade.

To find out more about community-led housing contact communityledhousing@wiltshire.gov.uk. Further information on the Community Housing Fund and the grant funding which is available, please see www.wiltshire.gov.uk/housing-community-fund.

2. In 2017 Wiltshire Council published our digital strategy. This sets out how we harness technology and digital opportunities to deliver our priorities by making our services more easily accessible to customers. It maximises the potential of our workforce and helps us work more collaboratively across the public sector.

Take a look at our short **Digital by Choice** video available on Youtube [here](#) to find out more about the digital library service (including e-books, magazines and audio), MyWiltshire app and e-forms. The video sets out our vision and the changes we have made already.

Watch this space over the coming newsletters as we provide more updates on how we intend to become 'Digital by Choice.'

Priorities November 2016

1. **Affordable housing (88.24%)**
2. **Deprivation and poverty (64.71%)**
3. **Digital engagement and broadband (48.24%)**



Royal Wootton Bassett and Cricklade Community Identified Priorities Newsletter. September 2018

LINKS TO USEFUL INFORMATION:

[WILTSHIRE INFORMATION NETWORK](#)

[WILTSHIRE JSA NETWORK website](#)

[ROYAL WOOTTON BASSETT & CRICKLADE AREA BOARD JSA report 2016-18](#)

RWB & C Project Bank – soon to be available on the revised ‘Our Community Matters’ website:

<http://rwbc.ourcommunitymatters.org.uk/>

For regular updates from the RWB&C Area Board ...

Have a look at the NEW Our Community Matters website, where you can post your news, events and activities for all to see on the community noticeboard!

<https://ocm.wiltshire.gov.uk/rwb/>

Follow us on Twitter - @RWBandCCEM

AND sign up to Our Community Matters for your weekly Royal Wootton Bassett and Cricklade local newsletter:

[*here*](#), we would love to hear from you.



Royal Wootton Bassett and Cricklade Investing in our Communities Newsletter September 2018

- Please note, all figures are subject to confirmation with our Finance team and as such must be treated as provisional.

	2018-19 allocation (£)	Invested to date (£)	Available for investment (£)	Amount leveraged (£)
GENERAL CAPITAL GRANTS	43,646	10,739	32,906	Tbc
COMMUNITY AREA TRANSPORT GROUP (CATG)	14,758 (capital)		14,758	
YOUTH GRANTS	25,877	9,480	16,398	
HEALTH & WELLBEING / OLDER PERSON CHAMPION	7,700	7,700	Budget committed to appointment of Health & Wellbeing/ Older Person's Champion, Ellen Blacker	

NEW GRANT APPLICATIONS July 2018

GENERAL GRANTS	Amount requested	Total project amount
<p>Broad Town Parish Council, seeking £794.97 towards new football goals needing replacement (deferred application from previous meeting).</p> <p>Please view full application here: Area Board Grant no 2866 http://services.wiltshire.gov.uk/areaboardgrants/grant_detail.php?gid=2866</p>	794.97	1589.95
<p>Tockenham Village Hall Committee, seeking £3,130.00 towards a storage unit for Tockenham.</p> <p>Please view full application here: Area Board Grant no 3003 http://services.wiltshire.gov.uk/areaboardgrants/grant_detail.php?gid=3003</p>	3,130.00	7,760.00
<p>Broad Town Village Hall, seeking £3,000.00 towards the refurbishment of kitchen and toilets.</p>	3,000.00	17,400.00



Royal Wootton Bassett and Cricklade Investing in our Communities Newsletter September 2018

<p>Please view full application here: Area Board Grant no 2998 http://services.wiltshire.gov.uk/areaboardgrants/grant_detail.php?gid=2998</p>		
<p>Lyneham Primary School, seeking £4,000.00 towards the creation of a forest school area for pupils.</p> <p>Please view full application here: Area Board Grant no 2991 http://services.wiltshire.gov.uk/areaboardgrants/grant_detail.php?gid=2991</p>	4,000.00	12,350.00
<p>Lydiard Millicent Parish Council, seeking £3,000 towards path improvement of the public footpath behind The Sun pub.</p> <p>Please view full application here: Area Board Grant no 2979 http://services.wiltshire.gov.uk/areaboardgrants/grant_detail.php?gid=2979</p>	3,000.00	6,000.00
<p>Royal Wootton Bassett Leg Club, seeking £4490.17 towards equipment costs for the Heel2Heal project.</p> <p>Please view full application here: Area Board Grant no 2969 http://services.wiltshire.gov.uk/areaboardgrants/grant_detail.php?gid=2969</p>	4,490.17	14,230.45
<p>Marston Meysey Playpark, seeking £5,000 towards refurbishment of the village playpark.</p> <p>Please view full application here: Area Board Grant no 2925 http://services.wiltshire.gov.uk/areaboardgrants/grant_detail.php?gid=2925</p>	5,000.00	13,868.49
<p>North Wilts Woodturners Association, seeking £1,588.00 towards a training equipment update.</p> <p>Please view full application here: Area Board Grant no 2901 http://services.wiltshire.gov.uk/areaboardgrants/grant_detail.php?gid=2901</p>	1,588.00	3,176.65
COUNCILLOR INITIATIVES	Amount proposed	Total project amount
<p>Supporting the Royal Wootton Bassett Local Youth Network with the consultation and preparation work for a plan to deliver Positive Leisure Activities for young people in the Royal Wootton Bassett area.</p>	1,500.00	N/a



**Royal Wootton Bassett and Cricklade
Investing in our Communities Newsletter
September 2018**

Please see separate report for further information.		
The Area Board has been asked to consider contributing £1,000 towards development of a walking app working in partnership with the Ramblers.	1,000.00	100,000.00
Please see separate report for further information.		

COMMUNITY AREA TRANSPORT GROUP (CATG)	Amount requested	Total project amount
Please see separate CATG report.		

To note:

Pay increase made to Health and Wellbeing Champion, Ellen Blacker under delegated authority: From £15.00 to £17.50 per hour, in line with the arrangement in Malmesbury community area.



**Royal Wootton Bassett and Cricklade
Investing in our Communities Newsletter
September 2018**

GENERAL GRANTS/CLLR INITIATIVES UPDATE 2018-19

Meeting/Organisation	Amount awarded (£)	Total project amount (£)
May 2018		
Allsorts Pre-School and Nursery - awarded £1,452.00 towards replacement of a perimeter fence.	1,452	2,904
RWB TFC Vets - awarded £819.96 for four aluminium goals (deferred application from March meeting).	819.96	819.96
Purton Tennis Club - awarded £5,000 towards new fencing.	5,000	10,000
The Memorial Hall, Royal Wootton Bassett - awarded £700 towards replacing an old sink unit.	700	1410.72
Celebrating Age - awarded £1,500 towards Year 2 costs.	1,500	201,991 (for county-wide project)

YOUTH GRANTS/COUNCILLOR INITIATIVES UPDATE 2018-19

	Amount awarded (£)	Total project amount (£)
Continued funding for CMAS to work in the community area until the end of the financial year, as agreed at March and July 2018 Area Board meetings.	Ongoing	Ongoing



Royal Wootton Bassett and Cricklade Investing in our Communities Newsletter September 2018

USEFUL LINKS

Area Boards have authority to approve grants under powers delegated to them. Under the Scheme of Delegation Area Boards must adhere to the [Area Board Grants Guidance](#)

The community grant funding criteria and application forms are available on Wiltshire Council's website: [here](#).

Further information about the Community Area Transport Group (CATG) and youth grants can be found by clicking on the following links:

[Community Area Transport Group](#)

[Youth Grants](#).

Wiltshire Walking Project

Aim:

The project's aim is to help people to become more active by making walking more accessible, fun, and interesting. This report provides an update on the project and a request for funding from the Royal Wootton Bassett and Cricklade Area Board.

Executive Summary:

The Community Engagement Manager, along with the Wiltshire History Centre, Public Health Wiltshire, local walking groups and the Open University, is to work in partnership with Ramblers GB to develop a mobile device application that will be launched in Wiltshire through the support of its Area Boards. The application will be available to download on smartphones and it will contain local interactive quality walks in the area.

Alongside this, an application has been submitted to the Heritage Lottery Fund to support the costs of the project and enhance it through the creation and capture of local heritage and history walks.

Benefits:

This project directly addresses both Wiltshire Council's and the Royal Wootton Bassett and Cricklade community area's local priorities including:

- Combating loneliness and isolation
- Encouraging healthy lifestyles
- Tackling obesity
- Improve our mental health
- Provide more activities for older people
- Provide positive activities for young people
- Improving affordable access to arts and cultural activities
- Increasing volunteering and providing skills

Proposal:

- *Development of a digital app for mobile devices* – Final discussions are taking place with Ramblers GB and it is expected that an agreement will be signed shortly (terms of agreement have been established) to jointly develop a digital app. This will initially be launched and delivered in Wiltshire with the learning and experience being used to provide a template that can be rolled out across the country.

Ramblers GB are seeking to modernise the way they work and have identified funding to develop and maintain a walking app that will include interactive elements such as pictures, text, local waymarks and links to local walking groups.

WILTSHIRE COUNCIL

Royal Wootton Bassett and Cricklade Area Board

18 September 2018

By partnering with Wiltshire Council's communities team, they can address their need to attract new members through promoting the launch of the app via our community groups and networks.

In return, Wiltshire Council through its Area Boards will receive a digital walking app which it has influenced in its development without the need to pay for it or maintain it. A member of the Communities team will work closely with the Ramblers throughout the development stage to ensure that features such as health metrics are included.

This intention is that the application will:

- ✓ Be free to download and use, even if you are not a member of Ramblers GB
 - ✓ Include the ability to add way marks, pictures and other interesting features
 - ✓ Allow walks to be rated and graded
 - ✓ Link with existing Wiltshire initiatives such as Get Wiltshire Walking.
 - ✓ Be maintained by the Ramblers Association
- *Heritage Lottery Fund (HLF)* – The communities team in partnership with the Wiltshire History Centre are in the process of applying for HLF funding to enable local community groups and parishes to produce local heritage walks which can be uploaded to the app.

It is anticipated that communities who wish to be involved will be supported to run local history projects, collecting stories, memories, photographs and historical artefacts. A toolkit will be created to assist groups taking part. The Wiltshire and Swindon History centre will support this element of the project, using its resources and records. The archives can then be digitised as walks in the App. This will provide a permanent, living legacy for each project. Pilots are in the process of being identified across a range of heritage themes including literature, architecture, landscape, social history and industrial heritage

- *Promote the project* – The project will have national, county wide and local promotion. Your Community Engagement Manager working with local stakeholders and the wider community will run workshops and events, promote the walks and the application, establish links with surgeries, health and wellbeing groups as well as other organisations that can support the project. The outcome that we are looking for is an increase in people regularly walking especially amongst those who are currently inactive.
- *Academic Sponsor* – The Open University will act as academic sponsor for this project, bringing extensive knowledge and learning about the development of digital health solutions. They will also assist with the development of the app and the involvement of users that is planned before launch

Funding:

- *Creation of the digital app* - The funding, including ongoing support and maintenance will be provided by Ramblers GB. A small one-off contribution may be made by the Communities team to ensure that any desired additional features are included.

- *Heritage and history Walks* - The funding for this part of the project will come from the HLF application. If the HLF bid is unsuccessful the main project can still take place but will need to be scaled down and will not include this element
- *Getting People Walking* - Local events, promotion of the app and encouraging walking will mainly be funded by the money provided by the Area Boards. A contribution will also go towards paying for the Open University element.

The total funding for the project across Wiltshire including the heritage Lottery fund is estimated at over £50k with a similar amount to be provided by Ramblers GB to develop and maintain the digital app. This means that approximately £4 is being invested into Wiltshire for every £1 contributed by Wiltshire's Area Boards

Broad Time scales:

A detailed timeframe is being produced that fits with Ramblers GB, Wiltshire Council and the HLF. The project will run from now until the end of summer 2019 with the second year of the HLF funding providing local history projects and walks for an additional year. Below are broad timescales that fit with all parties involved

Task Name	Start Date	End Date	Duration days
Finalise agreement with Ramblers Association	25/06/2018	30/07/2018	35
Submit and apply for HLF funding	01/07/2018	01/10/2018	92
Development of Digital Application	01/11/2018	28/02/2019	119
Development of community toolkit	01/10/2018	28/02/2108	150
Gathering and testing of new walks	01/10/2018	31/03/2019	121
Creation of pilot heritage projects	27/07/2018	06/08/2018	10
Launch of App	01/04/2019	30/04/2019	29
Promotion and local events	01/04/2019	30/09/2019	182
Creation of additional heritage walks	30/09/2019	31/03/2020	183

Recommendation:

That Royal Wootton Bassett and Cricklade Area Board:

- I. Supports the Wiltshire Walks proposal and awards £1,000 towards the costs of the local element of the project.

Area Board Projects and Councillor Led Initiatives Application Form 2018/2019

To be completed by the Wiltshire Councillor leading on the project

Please ensure that you have read the Funding Criteria before completing this form

PLEASE COMPLETE ALL SECTIONS TO ENSURE THAT YOUR APPLICATION CAN BE CONSIDERED

1. Contact Details

Area Board Name	Royal Wootton Bassett and Cricklade Area Board		
Your Name	Cllr Mary Champion		
Contact number	07976 949660	e-mail	Mary.champion@wiltshire.gov.uk

2. The project

Project Title/Name	Supporting the Royal Wootton Bassett(RWB) Local Youth Network(LYN)
Please tell us about the project /activity you want to organise/deliver and why?	Support the RWB LYN with the consultation and preparation work for a plan to deliver Positive Leisure Activities for young people in the RWB Area.
<i>Important: This section is limited to 900 characters only (inclusive of spaces).</i>	

Where is this project taking place?	Royal Wootton Bassett
--	-----------------------

When will the project take place?	ongoing
--	---------

What evidence is there that this project/activity needs to take place/be funded by the area board?	The Local Youth Network (LYN) was originally set up through Wiltshire Council's Community Youth Officer. The post was deleted and since then the Area Board has had no formal method of communicating with, and giving a voice to, the Young People of the Area.
---	--

	<p>Cllr Sue Hughes from RWB Town Council has taken the lead on setting up a LYN for RWB. She has harnessed the support of a huge range of people and to date has been operating on a nil budget. This is not sustainable, as costs are being occurred out of people's own pockets.</p> <p>The LYN meets on a regular basis and is consulting in a very innovative way to get feedback and plan positive leisure activities for young people aged 13-19.</p> <p>The money, if granted, would help affray the costs incurred with this preliminary work and help towards creating a sustainable forum and formulate a plan which will meet the identified needs of the young people of RWB.</p>
--	---

How will the local community benefit?			
Does this project link to a current Community Issue?			
Does this project link to the Community Plan or local priorities? (if so, please provide details)	Yes – the Area Board is responsible for ensuring that there are Positive Leisure Activities for Young people 13-19 .		
Is this project supported by the Local Youth Network or Community Area Transport Group? (if it relates to young people or highways and transport	Yes – the Area Board is responsible for ensuring that there are Positive Leisure Activities for Young people 13-19 .		
What is the desired outcome/s of this project? A robust LYN providing a voice for local young people, a plan to deliver Positive Activities, Young People feel more valued by their communities, issues identified by the young people are addressed			
Who will be responsible for managing this project? Cllr Sue Hughes, RWBTC, together with Cllr reps from the Area Board Mary Champion and Allison Bucknell			
3. Funding			
What will be the total cost of the project?	£unknown as yet		
How much funding are you applying for? Please note that only capital funding is available	£1500		
If you are expecting to receive any other funding for your project, please give details	Source of Funding	Amount Applied For	Amount Received
	N/a	0	
Please give the name of the organisation and bank account name (but not the number) your grant will be paid in to. (N.B. We cannot pay money into an individual's bank account)	To be provided by Sue Hughes		
4. Declaration – I confirm that...			
<input type="checkbox"/> The information on this form is correct and that any grant received will be spent on the activities specified - Yes <input type="checkbox"/> Any form of licence, insurance or other approval for this project will be in place before the start of the project outlined in this application - Yes			

Name: Mary Champion

Date: 14/9/2018

Position in organisation: Mary Champion, RWB&C



Cricklade, Purton and Royal Wootton Bassett Community Policing Team Update



Hello and welcome to this Community Policing Team report.

Well it has been a busy time for Wiltshire police over the last couple of months and for myself as your new community coordinator . I have settled in well and I am thoroughly enjoying working with the local community.

There will be a few changes to the report over the next few months , which I hope you will enjoy and give you a better idea of what is happening in your areas and our results.

I will also make you aware of the current Wiltshire police campaigns and what you can do to help.

GOOD NEWS STORY

A male by the name of Sean PORTER appeared at Swindon Crown Court for sentencing today, July 23, he was sentenced for three counts of robbery, three counts of burglary, possession of an offensive weapon in a Lad-brokes store and aggravated vehicle taking from an address in Swindon.

PORTER was responsible for the Burglary at Crumps, 120 High Street, Royal Wootton Bassett which was

investigated by local officers, along side CID. PORTER was sentenced to 7 years in prison for all offences including this one.

This was excellent work by the local; community police of Royal Wootton Bassett and central CID.

One of our control strategy's

Help us tackle County Lines

Young and vulnerable people living in our communities are being exploited by drugs gangs. It's happening right now. And we need your help to protect them.

County lines is a term used to describe gangs and organised criminal networks involved in exporting illegal drugs into one or more importing areas in the UK, using dedicated mobile phone lines or other form of 'deal line'. They are likely to exploit children and vulnerable adults to move and store the drugs and money, and they will often use coercion, intimidation, violence and weapons. gangs based in cities like London are targeting the most vulnerable people in small towns across the country to sell class A drugs on their behalf.

This type of behaviour is a significant threat to our communities and will not be tolerated.

But we need your help to spot the signs and act on your concerns. Your voice will be heard and will make a difference.

Director of Intelligence Sonja Leith said: "County lines is everyone's responsibility and I would urge members of the public to be vigilant and look out for some of the most visible signs that county lines drugs gangs are operating in neighbourhoods and to report this to police.

"Our intelligence teams work hard to identify where county lines are exploiting vulnerable children and adults, and to proactively disrupt these networks. The intelligence we receive from our communities is crucial in helping us, our partner agencies and neighbouring forces in tackling county lines and safeguarding people.

"By raising awareness of the issue, I hope more people will be able to spot the signs, and feel comfortable in reporting information to the police. Your call could save lives."

Angus Macpherson, Police and Crime Commissioner for Wiltshire and Swindon, said: "Two of my priorities for the next four years, as outlined in my Police and Crime Plan 2017 – 2021, are to prevent crime and keep people safe, and protect the most vulnerable people in society. It is these very people who are being targeted by individuals from large metropolitan cities, who are travelling to rural counties like Wiltshire, with the belief that they will be able to deal drugs from the properties of these vulnerable people. As a result, vulnerable people are being threatened and exploited, often in their own homes.

"I am aware that many people still consider drugs as a victimless crime. This is not the case, and we want to ensure that people who find themselves in these situations have support.

"The Force will continue to work with local authorities to reduce the harm and prevent the crime caused by alcohol and substance misuse, but I would also urge the residents of Wiltshire and Swindon to help us combat drug supply – we cannot do it alone and the police often rely on information from the public to build up an intelligence picture. Please continue to help by reporting any information to 101."

Signs to look out for:

Exploitation

- Has a child or young person gone missing from school or home?
 - Are they meeting with unfamiliar adults?
 - Have you noticed a change in their behaviour?
 - Are they using drugs and alcohol?
 - Has there been a breakdown in relationships with family and friends?
- This could be a sign that they are being coerced and controlled to commit crime.
Call 101 to report it.

Cuckooing

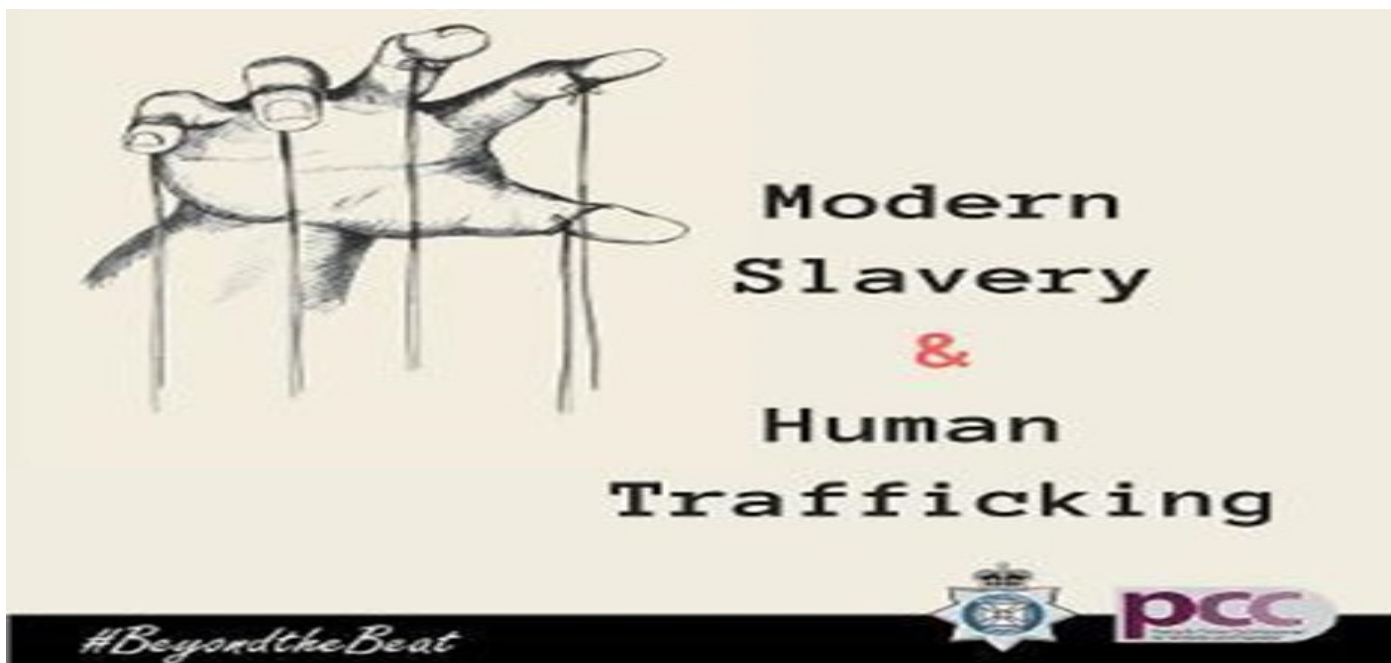
Drug dealers will often take over the homes of vulnerable people as they use it as a base to deal drugs in the area. The vulnerable person may be being kept inside against their will.

- Have you noticed more people calling at an address? Sometimes at unsociable hours?
- Have you noticed a neighbour has not been seen for a while?
- Are there suspicious smells coming from an address?
- Are there suspicious or unfamiliar vehicles outside the address?

Cuckooing could be taking place. Look out for your neighbours and report suspicions to 101.

Crimes that have impacted on the community from the 2nd August 2018 to the 31st August 2018

- ◇ On 02/08/2018 13:00 to 03/08/2018 09:00 at a farm in Chelworth road Cricklade Unknown suspect(s) have cut the lock off of the Injured parties generator and broken the grill it was behind in order to steal it from the premises. Goods stolen TVO £1,200. All enquiries have been exhausted and no offenders have been identified.
- ◇ On 04/08/2018 17:56 a vehicle was stopped at juct 16 coming into Royal Wootton Bassett and the driver was found in the possession of cannabis. The driver was dealt with by the way of a cannabis warning by the officer..
- ◇ On 08/08/2018 01:33 an unknown suspect (s) has gained entry via a back door of the local butchers in Royal Wootton Bassett and whilst in the premises they have stolen charity boxes from within.. Enquiries are on-going at this time.
- ◇ On 08/08/2018 19:25 a known male was staying at an address in Royal Wootton Bassett and whilst staying there he has stolen the owners vehicle . The vehicle was later located and police are currently looking for this male to arrest him.
- ◇ On 10/08/2018 00:01 Unknown suspect(s) has gained entry to a local Purton building by breaking the top panel on the door, and stolen items TVO £70. Enquiries have been completed but no suspects have been identified..
- ◇ On 13/08/2018 13:30 Unknown suspect has gained entrance to the unit in Cricklade that the injured party pays rent for. The injured party keeps his work tools in there, whilst in the premises they have stolen £7000 worth of tools. Enquires have been completed and no offender(s) have been identified.
- ◇ On 19/08/2018 18:30 a known group of youths have held a knife up to injured party's throat and stolen items including a speaker and its charger, £40 cash, cannabis and a grinder. . This took place close to Cricklade Leisure Centre. Three youths have been arrested and interviewed. All youths are currently released under investigation.
- ◇ On 20/08/2018 00:37 4 males in a black vehicle have attended Tesco express Lyneham and used cutting equipment to steal several cartons of cash from the ATM at that location. Police are currently investigating this crime at this time.
- ◇ On 19/08/18 at 2100 hrs Unknown suspect(s) have glued the owners locks closed on their farm gates in Purton, which will cost over £400 to replace and repair. Enquiries are ongoing.
- ◇ On 26/08/18 at 1700 hrs Unknown suspect has removed the gate securing a stable yard near Thornhill ,where the injured party stores his caravan. Suspects have then cut the crook lock off and stolen the caravan.. Property stolen was a - Bailey Pageant cream coloured - 2006.. Police are continuing with all lines of enquiry to identified any suspects and recover the property.
- ◇ On 31/08/2018 11:04 unknown suspects (s) have broken into the injured party's property in Royal Wootton Bassett and stolen jewellery of a sentimental value.. Police are continuing with their enquiries.



As part of our summer-long #BeyondTheBeat campaign to highlight the hidden demands on policing, we are urging residents to familiarise themselves with the potential signs of Modern Slavery.

Modern Slavery is the recruitment, movement, harbouring or receiving of children, women and men through the use of force, coercion, deception, and abuse of vulnerability or other means for the purpose of exploitation.

Individuals may be trafficked into, out of or within the UK, and they may be trafficked for a number of reasons including sexual exploitation, forced labour, domestic servitude and organ harvesting.

Often, people may not see themselves as victims.

Assistant Chief Constable Craig Holden, Force Lead for Crime, Justice and Vulnerability at Wiltshire Police, said: "Although Modern Slavery presents itself in many different ways in our communities, over the last few years the most notable and visible have been within nail bars and car washes.

"There has also been a significant trend in off-street prostitution, often involving women trafficked into sexual slavery; many who thought they were coming to the UK for other jobs and a better life.

"It is understandable that spotting the signs of modern slavery can be difficult but it is vital that we as a Force, and our local communities, are educated and have an approach that helps us to protect vulnerable people and prevent their exploitation.

"Information from the public is vital in the fight against modern slavery. Together, we can eradicate slavery and trafficking in Wiltshire, and reduce the exploitation of the most vulnerable people".

What are some of the signs of exploitation?

- Lack of personal protective equipment
- Chaperoned or accompanied everywhere
- Money being withheld from them
- Language barriers
- Working long hours
- Lack of possessions
- Passport held by someone else

Angus Macpherson, Police and Crime Commissioner for Wiltshire and Swindon, said: "Wiltshire Police and local partner agencies play a crucial role in tackling modern slavery and human trafficking across the county.

"This type of crime is an emerging national threat, and the reality is the Police cannot tackle this alone and need to draw upon the local community and partners to play an equal part. I would urge the public to remain on the look-out for possible exploitation in their communities and to report any concerns they have.

"Safeguarding the most vulnerable people and offering the best possible service to victims across Wiltshire and Swindon continues to be a top priority for the Police".

To report your concerns call us on 101. If you or someone else is in immediate danger call 999 straight away.
You can also report anonymously via:

- The National Modern Slavery Helpline on 08000 121 700
- Or Crimestoppers on 0800 555 111

Your Local PCSO's

Below are a list of the PCSO's that cover Royal Wootton Bassett/Cricklade/Purton and their specific area's of responsibility. If you need to make contact then you can use the email address,

northwiltshirecpt@wiltshire.police.uk

This is monitored by a number of officers who may be able to answer your query if your local PCSO isn't on duty.



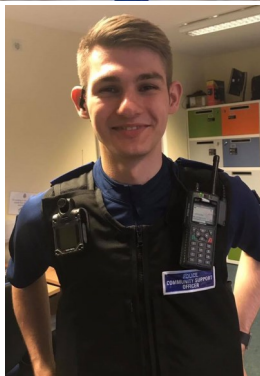
PCSO Andrew Singfield
Royal Wootton Bassett



PCSO Nicola Allan
Cricklade



PCSO Erin Davis
Royal Wootton Bassett Rural



PCSO Joshua Sherratt
Purton



National research indicates that a third of all reports of missing people are children aged between 13 and 15 years old.

In the last six months in Wiltshire there were 927 reports of missing children. Last month alone officers dealt with 193 missing children, a significant number of whom were reported missing more than once.

Detective Inspector Mark Kent, Force lead for Missing said: "The national and local statistics are shocking. When we hear about missing children we think of this happening in big cities, but the plain truth is that it is happening locally in our largely rural county of Wiltshire.

"No matter what your lifestyle or circumstance, growing up can be a difficult. Young people are exposed to a whole host new of threats, challenges and choices, which place them at greater risk.

"We know that with missing there is often a clear link to Child Sexual Exploitation, domestic abuse, neglect, grooming, gangs or drugs, But whatever the reason they are missing, we consider children and young people vulnerable and at risk of harm. Going missing is the symptom of underlying, more complex problems."

Over the last six months we have seen an increase in the number of young people reported missing in Wiltshire, which has risen by just under 50 per cent. This is a seasonal trend - we see numbers reported rising during the summer months and falling in the winter.

National charity Missing People reports that one in five children experiencing conflict and neglect in the home have been reported missing. Seven in 10 young people who have been sexually exploited have been reported missing and one in 10 children with mental health issues reported missing.

Many of the young people who frequently go missing are in care. Those who go missing from their home or place of care often have complex needs, resulting from challenging and traumatic family backgrounds.

DI Kent added. "Missing adults and children have a huge impact on the demand for policing in Wiltshire and the cost of it reflects on the number of individual cases that exist. Most children return safe and well soon after their reported disappearance. Many children go missing frequently and each report costs an average of £2,500 to investigate.

"It would be easy for the police to become frustrated with children who frequently go missing, but it is our job to protect them from harm, and we know that children who go missing a lot are most at risk from abuse or exploitation. It is important to see the bigger picture. Behind every report is a vulnerable young person at risk and in need of our help.

"We work together with the local authority Multi Agency Safeguarding Hub (MASH) and specialist children's social care teams; professionals who look for what is going on behind the scenes in young people's lives.

"We remind our officers to put themselves in their shoes, ask the right questions, listen and treat every child as an individual. No two cases will ever be exactly the same and everyone should be treated fairly and with compassion."

Wiltshire Police is signed up to Child Rescue Alert, a national system to alert the public to an abduction or other high risk child disappearance where the child is in imminent danger of serious harm. The initial hours after a child goes missing are crucial and a sighting by a member of the public can lead to the safe recovery of the child.

Alerts are used in extreme cases and are fortunately used rarely. They can be sent directly to individuals who register with the service, as well as through the media.

Nationally 152,465 members of the public have already signed up, some 5,263 of these in Wiltshire. The charity has set a target of getting one million people registered to receive alerts.

Anyone can register free at <https://www.childrescuealert.org.uk/register> to receive alerts near their home or place of work by text or email. Missing People's advice to anyone thinking of going missing, who is already away from home, or missing a loved one is to call or text them on



The Emergency Services Show 2018

@ Cotswold Airport

**Cotswold Airport, Kemble,, Kemble,, Gloucestershire, GL7
6BA**

16th Sep 2018 10am-4pm Sunday



The link below is for Community Messaging. The Community Coordinator for this area sends out a daily message, if there has been any crime that will benefit the community to be aware of. This includes thefts, scams and burglaries, the aim is to inform you of what is happening in your area, help you take any actions to avoid becoming a victim of crime and to alert you as a potential witness to any crime. Its easy to sign up and only messages, relevant to your area, are sent to your email inbox.

<https://www.wiltsmessaging.co.uk/>

The email address for the Wiltshire North Community Policing team is
northwiltshirecpt@wiltshire.police.uk

Please phone 101, or 999 in an emergency to report any incidents or
crimes

We hope you find these updates useful, for the latest news, crime prevention advice and appeals please follow us on:

Twitter <https://twitter.com/wiltshirepolice>

Facebook <https://www.facebook.com/wiltshirepolice/>

Or sign up to Community Messaging <https://www.wiltsmessaging.co.uk/>

This report has been prepared by PC 1952 Steve Carroll

Thank you for your continued support to Wiltshire Police.



Rural Affairs Strategy

Strengthening safe and prosperous communities

2018 - 2021



I. Background

- 1.1 Farming Minister George Eustice said: “Food and farming is our largest industry in this country, it is worth over £108bn a year – bigger than aerospace and automotives put together. It is a huge industry.” (Sep 2016, Westminster - Back British Farming Day)
- 1.2 Wildlife Crime and Rural Affairs form a significant part of policing. The National Police Chiefs’ Council (NPCC) portfolio ‘Wildlife Crime and Rural Affairs’ is led by senior police officers who work in conjunction with expert partners. This strategy is focussed on Rural Affairs whilst having commonality with some aspects of the Wildlife Crime Strategy 2018-2021.
- 1.3 The types of rural crimes seen across the UK vary from all types of farm crime to fly tipping. Police forces also face regional and local variations in rural crime. According to the NFU Mutual Rural Crime Report 2017, “The rise in rural crime has come about due to two main factors. Social and economic change has seen the number of farms fall and close-knit communities collapse. Modern transport links now enable thieves to steal farm machinery and move it into mainland Europe in a matter of hours”.

The report highlights some emerging trends as:

- Being watched or ‘staked out’ is the biggest concern for people living in the countryside
- Ongoing livestock theft is raising concerns that stock is being stolen for slaughter and processing outside regulated abattoirs before illegally entering the food chain
- Thieves are cloning the identities of large, expensive tractors to make them easier to sell and harder to detect
- Small and older tractors are being targeted by organised gangs for export to developing countries
- Since Land Rover ended production of its Defender, the iconic farm vehicle has become an even bigger target for thieves

NFU Mutual Rural Crime Report 2017

<https://www.nfumutual.co.uk/news-and-stories/rural-crime-report-2017/>

NFU Combatting Rural Crime

<https://www.nfuonline.com/cross-sector/rural-affairs/rural-affairs-rh-panel/nfu-report-lays-bare-true-costs-of-rural-crime/>

- 1.4 The extent of the cost of rural crime is outlined in the 2017 NFU Mutual Rural Crime report which identifies the insurance claim cost in 2016 to be £39.2m, £5.4m of this cost is identified as Agricultural Vehicle Theft alone. Crimes such as livestock theft also have a significant cost of £2.2m in the same year.
- 1.5 The 2015 National Rural Crime Survey was answered by 17000 people living and working in rural communities. It suggested the cost of rural crime to be significantly higher than previously identified, stating that the true cost of rural crime could exceed £800m. The key findings from this survey described the financial impact of crime on the rural economy equates to £200 for every household in the countryside and an average cost to rural households, who are victims of crime, of £2500 and £4100 for rural businesses. It also describes the fear of crime as increasing and a low satisfaction rate of police performance in rural areas. Crime in these areas is underreported which affects the true understanding of the extent crimes.

NRCN report: The True Cost of Crime in Rural Areas 2015
<http://www.nationalruralcrimenetwork.net/research/internal/national-rural-crimes-survey-2015/>

“I was afraid, yes. I wake up every night at 1:30am and don’t go to sleep again until 4am, because that’s when they come.” – Jeremy Scott, an arable farmer from Kent, who sustained serious injuries after defending his property from four masked individuals breaking into his farm. Mr Scott’s son said “It seems that these people operate with absolute impunity. There’s almost no neighbour, that we have, who hasn’t been broken into.”

(National Farmers Union, 2017)

<https://youtu.be/Jddq8SjRejE>

2. Initial research, current situation

- 2.1 This initial assessment has been completed in two ways. Firstly, a benchmarking survey of police forces* that identified the current environment. Secondly, a series of workshops with police practitioners and partner organisations were held in order to gauge opinions on what is important to rural communities, a view on current services and to generate ideas for improvement. The survey and workshops' results were added to other survey and academic work to provide a rounded picture and the start point for development work.
- 2.2 In October 2017, a benchmarking survey was undertaken to better understand the environment and current investment into rural policing across the UK. Whilst appreciating that all rural areas of UK will be covered by police patrols, the exercise also focused on understanding the extent of dedicated rural crime police resources dealing with bespoke rural crimes.
- 2.3 The benchmarking survey used a framework, already adopted in policing, that is used to build new (or reinforce current) services by assessing:
- Capacity
 - Contributions
 - Capabilities
 - Consistency
 - Connectivity
- 2.4 The results of the benchmarking survey of police forces across the UK, identified a range of approaches to resourcing the policing of rural communities and addressing rural crime. This ranged from dedicated rural crime teams and resources to treating rural crime as business as usual. Whilst it appears that forces can readily recruit into existing bespoke rural teams, there are opportunities to improve further through greater data collection and establishing a robust evidence base, agreeing national standards relating to accredited training, policies, procedures and use of resources.

- 2.5 Benchmarking results as of October 2017 illustrate the mixture of solutions current adopted. Of the 53 forces:
- 26 police forces across the UK have a dedicated resource to tackling rural crime, 16 of these are dedicated rural crime teams consisting of two or more full time police officers (see Table 1), five forces have one full time police officer who is dedicated to rural crime
 - 11 police forces across the UK have at least one member of police staff dedicated to combat rural crime
 - 29 police forces utilise volunteers to fight rural crime, 13 of these dedicate Special Constables to fighting rural crime
 - 43 police forces across the UK (including non-Home Office forces) have a wildlife crime capability
 - 12 of 21 teams with a dedicated police officer resource provide a level of training to dedicated rural officers
 - Of all the forces that don't have a dedicated rural crime team, none of them have plans to introduce one
- 2.6 The citizen's role in policing continues to be as vital in modern policing. Embracing and developing 'citizens in policing' provides an excellent opportunity to not only increase additional capabilities, but also to build social capital and ensure that the service continues to successfully police with our communities' consent. The benchmarking exercise conducted in October 2017 identified the scale of support that Police Support Volunteers (PSVs) and Special Constables provide in a dedicated volunteer resource to fighting rural crime. Table 2 describes the extent of dedicated PSVs and Special Constables tackling rural crime.

**The 43 home office forces in England and Wales, the British Transport Police, Civil Nuclear Constabulary, Guernsey, Isle of Man, Jersey, MOD police, RAF Police, Royal Navy Police, Police Service of Northern Ireland and Police Scotland.*

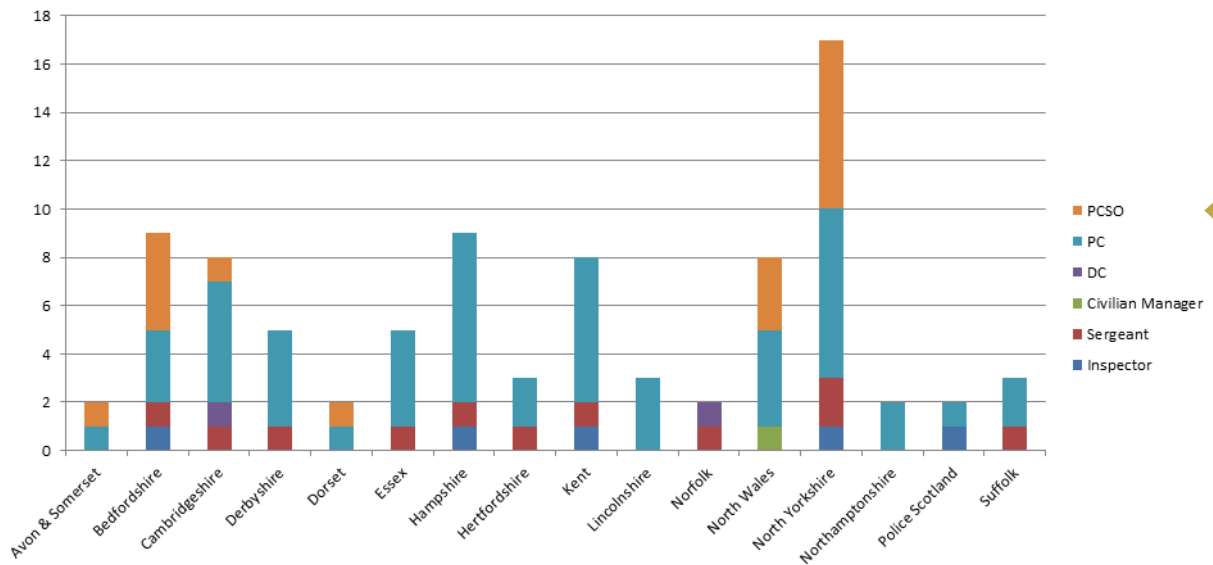


TABLE 1

Shows the extent of officers dedicated to tackling rural crime

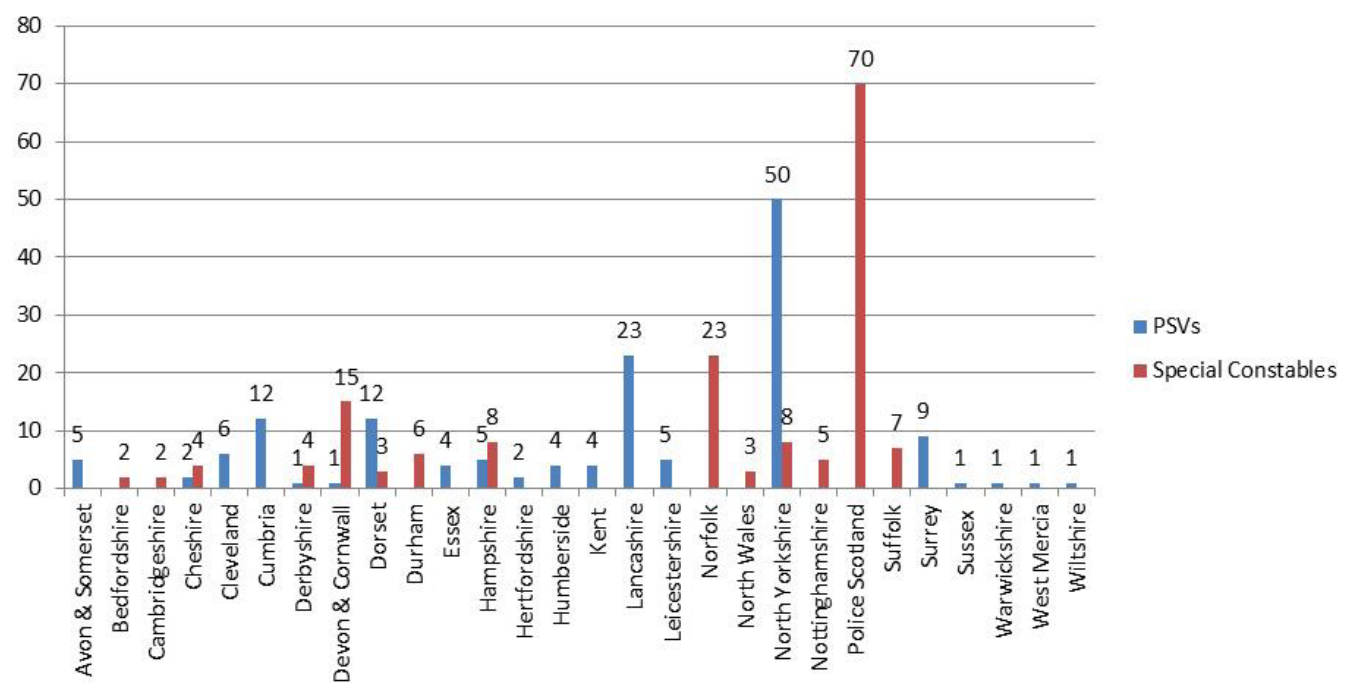
TABLE 2

Shows the extent of dedicated PSVs and Special Constables tackling rural crime

PSVs



Specials



3. Purpose

3.1 Following engagement in 2017 with a range of stakeholders and police forces, the overall Rural Affairs Strategic Aims were agreed as:

- Safer rural communities
- Enhanced public engagement
- Increased public confidence in the police
- Empowered communities
- Strong partnership working
- Raised profile of rural affairs
- Embedded rural focus into policing culture

3.2 A key to achieving this is by tackling organised criminality. Organised Crime Groups (OCGs) target and exploit rural communities across a range of crime types, for example organised plant theft, livestock theft, burglaries targeting firearms, poaching and hare coursing. Our rural communities are perceived as soft targets with these organised criminals feeling they can go about their criminal activity undetected in large rural areas. Understanding and targeting these OCGs is essential to improving the situation. The police led Regional Organised Crime Units (ROCU) have demonstrated that the 'offenders' involved in organised acquisitive crime such as ATM rip out offences target remote communities, laundering their proceeds through other activities, for example gambling at illegal hare coursing events. Similarly, legally held firearms are normally found secured in rural properties and OCGs have been known to target these addresses in order to filter these firearms through criminal networks to be used in offences such as armed robberies, drug distribution, and kidnap and extortion. Close partnerships with the ROCU network can assist in targeting organised criminality operating in rural locations to the benefit both rural and urban communities. Further to this the development of a national rural crime strategic threat assessment will allow for a better understanding of the challenges rural policing faces.

3.3 The police cannot solve crime problems alone. Engagement with rural communities and partners is essential to enhancing the flow of intelligence, as well as utilising the experience and expertise of the public and partners. Importantly publicising good news stories and positive results of police and partnership action will create an effective and positive cycle. Collectively, this will contribute to strengthening safe and prosperous rural communities.

3.4 Whilst there is a natural cross over between wildlife crime and rural affairs, it is important to note that this strategy is separate to its sister Wildlife Crime Strategy. The Wildlife Crime Strategy was developed from similar consultation exercises which identified the following :

Wildlife crime strategic aims:

- Enhance the conservation of wildlife
- Develop strong partnership and stakeholder working
- Raise public awareness of wildlife crime
- Embed a wildlife focus into policing culture
- Improve recording of wildlife crime
- Improve wildlife crime legislation with proportionate sentences
- Secure future funding for the National Wildlife Crime Unit (NWCUC)
- Develop information sharing agreements with key stakeholders
- Tackle Organised Crime Groups

What we should be tackling now (wildlife crime):

- Establish senior officer leads for all police forces in tackling wildlife crime and raising internal police awareness
- Continue to develop the briefing notes available on the College of Policing's Authorised Professional Practice (APP) to assist investigators and call handlers
- Train and develop the understanding of wildlife crime for members of the Crown Prosecution Service and courts to improve convictions and deliver proportionate sentencing
- Focus on online and dark-web wildlife crime
- Widen the number of recordable wildlife crimes so as to better understand and reflect the range and scale of the portfolio
- Develop academic engagement
- Secure future funding for NWCUC and dedicated wildlife crime officers
- Seek accreditation for national training for PWCOs from the College of Policing
- Develop a clear communication plan
- Strengthen approach to tackling OCGs

4. Approach

- 4.1 Through harnessing the passion, expertise, and contributions of partners joined with the policing effort we will:
- Adopt a clear philosophy based upon intelligence led and evidence based approaches, inclusive partnership, infrastructure that drives improvement, prioritisation against greatest risk, effective prevention, engagement and communication
 - Develop plans at the strategic, regional, and local levels
 - Recognise and plan for both operational and organisational requirements
 - Agree priorities and support those through sound infrastructure
 - Incrementally build on successes which are appropriately resourced, tested and assessed for benefits
- 4.2 Achieving the wildlife crime strategic aims will require consideration of, and action against, a considerable range of issues. Therefore, they have been prioritised against the types of offences which cause significant harm to rural communities, their businesses and farming as an industry. Some issues may be part of work already underway in NPCC portfolios such as Roads Policing, Domestic Abuse, Heritage Crime, Serious and Organised Crime others may sit more easily within Rural Affairs. There will also be a continuous link to this portfolio's sister Wildlife Crime Strategy, as well as other intrinsically linked themes such as Heritage and Cultural Property Crime. It is important to recognise that rural crime and anti-social behaviour has an adverse impact on the natural environment and heritage assets found across the UK.

5. Priorities

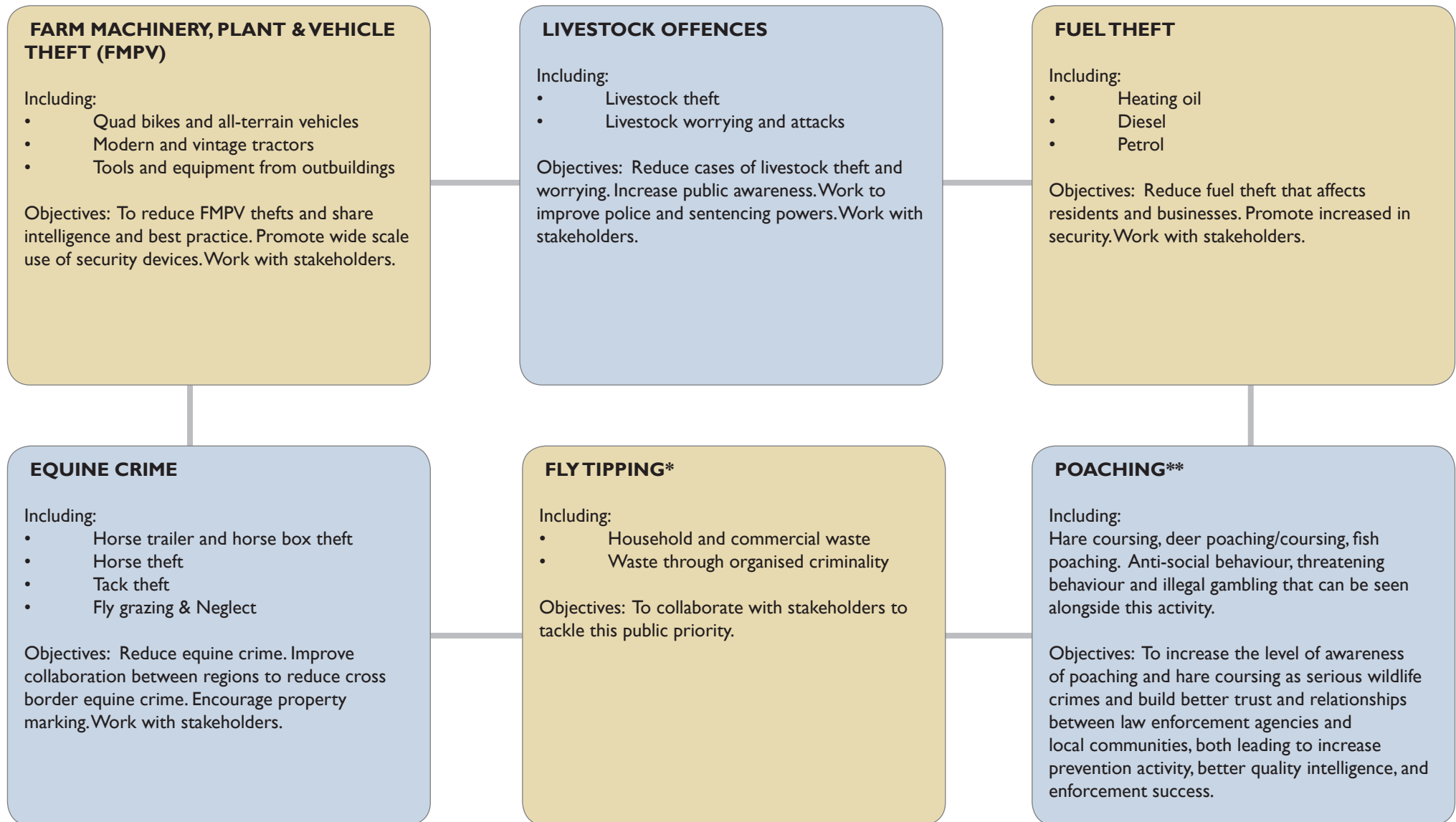
- 5.1 Initial work is based upon findings from the consultation exercises against the agreed service outcomes. It is divided into Operational (5.2) and Organisational (5.4) Priorities.

The Rural Affairs Operational Priorities have been developed through the key issues raised by police and partners. All police forces were invited to identify their local rural crime priorities.

This was compared against existing rural crime claim data from the NFU Mutual Rural Crime Report 2017 and information and accounts detailed in the NFU Combatting Rural Crime Report 2017.

Although crimes such as off road biking, heritage, and fisheries related crime are not included as Operational Priorities they will be managed and addressed regionally and locally. Similarly, emerging crimes such as agrochemical theft will also require review through the CONTEST counter terrorism strategy to ensure an appropriate response locally and regionally.





- 5.2.1 *The police service is contributing to this national issue as a member of the DEFRA lead National Fly-Tipping Prevention Group.
- 5.2.2 **Poaching offences were identified as a priority. The Poaching Priority Delivery Group has previously fallen under the governance of the wildlife crime portfolio. However, due to the cross-over between the animal welfare issues and the antisocial behaviour, threats, gambling, and damage that comes with crimes like hare coursing, fish and deer poaching; this Group will now sit as a priority within both wildlife crime and the rural affairs strategies.
- 5.2.3 Hare coursing has been highlighted as a key area for police to focus on when tackling rural crime by both this strategy but also in the NFU Combatting Rural Crime report of 2017. The UK's flat rural landscapes are the environment for this organised criminal activity. Criminals are prepared to travel hundreds of miles across counties and countries to participate in this blood sport. Organised criminal groups coordinate illegal gambling events, threatening and intimidating rural and farming communities in order to achieve their aims. Residents fall victim to violent incidents and live in fear of these groups returning in the night. Including poaching as a priority across both the Wildlife Crime Strategy and the Rural Affairs Strategy will ensure all elements of this organised crime will have focus.
- 5.3 Initial operational work will be delivered through a small number of Rural Affairs Priority Delivery Groups (see Diagram 1) which will adopt an PREVENTION, INTELLIGENCE, ENFORCEMENT and REASSURANCE approach and:
- Raise the profile of rural crime
 - Set objectives to combat rural crime
 - Utilise effective problem solving
 - Develop strong links with all Regional Organised Crime Units (ROCU) through a regional structure to tackle Organised Crime Groups (OCG) causing significant harm to rural communities
 - Identify and provide evidence for changes to legislation and work with partners to provide meaningful change
 - Increase awareness via partners, the public, and law enforcement agencies
 - Increase intelligence sharing between stakeholders
 - Coordinate a cross border response to Rural Affairs

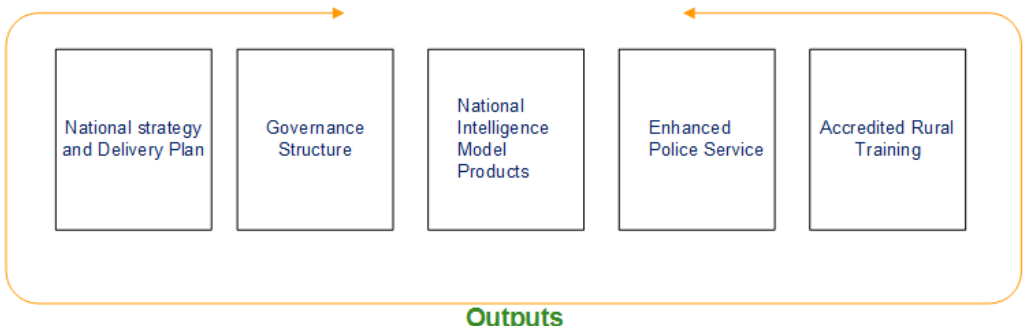
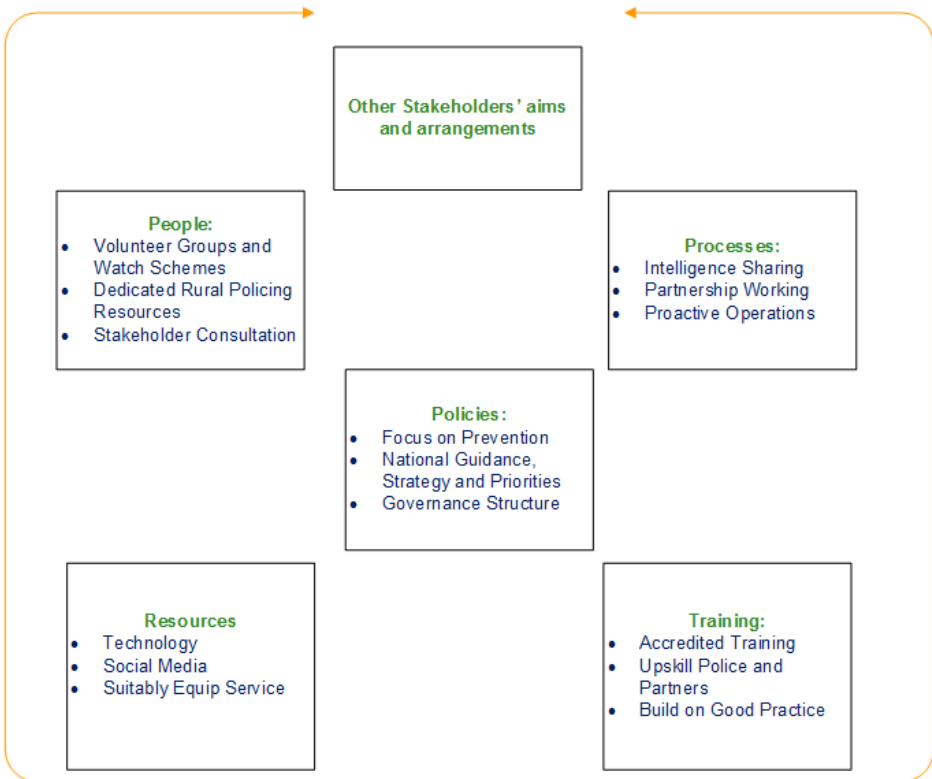
5.4 Organisational Rural Affairs Priorities

- 5.4.1 Findings from the national surveys and key stakeholder engagement have demonstrated the need for a clear organised approach nationally with transparent governance arrangements to develop, consult, approve and manage initiatives and overall service delivery. A service specification was drawn up (see diagram following) which sets out the key areas to develop:
- Creation of a rural affairs strategy, delivery and communication plan
 - Governance structure and creation of an Assurance Group made up of key partners
 - National Intelligence Model products to support prosecution of offenders
 - Enhancing the policing service to rural communities
 - Accredited rural training
- 5.4.2 First steps are to:
- Establish senior NPCC leads for rural affairs and wildlife crime
 - Draft and consult upon a national infrastructure encompassing national, regional, and local decision making
 - Develop a national rural crime strategic threat assessment
- 5.4.3 The strategy will be developed and taken forward using an academically robust evidence base of what works and what is appropriate to the issue being addressed. Delivery work will be prioritised, resourced and managed in line with agreed governance arrangements.

6. Summary

- 6.1 The Rural Affairs Strategy will develop incrementally, reflecting the wide and diverse issues faced by rural communities. It will be driven by reliable data to build upon the national evidence base and inform future decisions relating to service standards, training and accreditation, configuration and delivery. Consultation and communications will be tailored to the appropriate audiences and issues so as to be fully inclusive and reap the most beneficial responses for the improvement of services.
- 6.2 Progress will be reported through the infrastructure arrangements and through the bi-annual NPCC Wildlife Crime & Rural Affairs e-newsletter.

Rural Affairs



Wildlife Crime & Rural Affairs Delivery Groups



FARM MACHINERY, PLANT & VEHICLE THEFT



LIVESTOCK OFFENCES



FUEL THEFT



EQUINE CRIME



FLY TIPPING



POACHING



BADGER PERSECUTION



BAT PERSECUTION



"CITES"



FRESHWATER PEARL MUSSELS



RAPTOR PERSECUTION



PRODUCED BY:

NORTH YORKSHIRE POLICE
NORTHALLERTON, MARCH 2018

Royal Wootton Bassett and Cricklade Area Board – Report for September 2018

Community Engagement

The Fire Service continue to offer Safe & Well visits to residents and if you or someone you know is in need a working smoke alarm to be fitted or needs some fire safety advice in the home or are just worried about what to do in an emergency then you can contact us at; <http://www.dwfire.org.uk/safety/safe-and-well-visits/>

We will arrange for one of our trained advisors or fire crews to pop round and discuss your requirements and needs, give you some top tips for fire safety within the home and if you meet our criteria for free smoke alarm installation we will also do that during the visit.

Crews at Cricklade and RWB Fire stations carried out the following events below:

- 6 June attended Brinkworth Earl Danby C of E Primary for recruitment and to share a message of fire safety
- 25 June welcomed the Scouts to the station to show them about and talk about fire safety
- 16 July we attended the Dyson charity football event for recruitment and fire safety
- 13 July welcomed the Wootton Bassett beavers to the station to show them about and talk about fire safety.

Safety Messages

Reducing your risk of fire

At this time of year we start to see an increase in fires involving chimneys. Chimney fires can develop into roof fires in the right conditions with devastating effects. This is especially true with thatched roof properties.

To reduce your risk of a chimney fire we recommend:

- Ensuring any works carried out are by a registered professional
- Sweep your chimney at least twice a year – in autumn and early spring
- Keep your chimney in good working order, for example by fitting a bird guard to prevent birds nesting in the flue.

Chimneys should be swept:

- At least once a year when using smokeless fuels or bituminous coal
- Every three months when burning wood
- Once a year when using oil or gas.

When your fire is alight, check the loft space occasionally to make sure no smoke is leaking into the roof space from cracked joints or defective brickwork.

<http://www.dwfire.org.uk/safety/safety-at-home/chimney-safety>

<http://www.dwfire.org.uk/wp-content/uploads/2018/05/DWFire-Thatched-Living.pdf>



Get ready for winter



The Government's 'Get Ready for Winter' campaign includes advice, guidance and links for health, travel, homes, power, communications, severe weather, and flooding risk.

The site is hosted on the Met Office website and can be found at <https://www.metoffice.gov.uk/barometer/advice>

The [latest weather warnings](#) can also be found on the Met Office website.

During extreme bad weather, the following websites will also be of use:

- www.trafficengland.com – covering travel advice for M4 and trunk roads
- www.bournemouth.gov.uk
- www.dorsetforyou.co.uk
- www.poole.gov.uk
- www.swindon.gov.uk
- www.wiltshire.gov.uk
- www.dorset.police.uk
- www.wiltshire.police.uk

Response

Total Emergency Calls for Cricklade Fire station; 14/06/2018 – 22/08/2018

Category	Callsign	Total Incidents
False Alarm	52P1	7
Fire	52P1	13
Other	52P1	13
Special Service	52P1	1
Medical Calls	52V1	5
Total		39

Other – This can be a movement to another fire station to provide fire cover during an ongoing incident.

Due to IT access at the time of writing, only the figures for the specified date range are shown, September figures will be shown in the next Area Board report.

Availability of On-Call appliance 52P1 Cricklade 18/06/18 – 24/09/18;

Appliance	Day (06:00 - 18:00)	Night (18:00 - 06:00)	Total
52P1	49.13%	83.81%	66.16%

The reduced figures during the day are attributed to possible course attendance as part of a Firefighters requirement to maintain competence, personnel taking annual leave or due to fulltime work commitments where individuals work outside of the town and cannot supply us cover.

Total Emergency Calls for RWB Fire station; 14/06/2018 – 22/08/2018

Category	Callsign	Total Incidents
False Alarm	56P1	13
Fire	56P1	16
Other	56P1	8
Special Service	56P1	8
Medical Calls	56V1	15
Water Carrier	56W1	17
Total		77

Other – This can be a movement to another fire station to provide fire cover during an ongoing incident.

Due to IT access at the time of writing, only the figures for the specified date range are shown, September figures will be shown in the next Area Board report.

Availability of On-Call appliance 56P1 RWB 18/06/18 – 22/09/18;

Appliance	Day (06:00 - 18:00)	Night (18:00 - 06:00)	Total
56P1	53.08%	83.93%	68.51%

The reduced figures during the day are attributed to possible course attendance as part of a Firefighters requirement to maintain competence, personnel taking annual leave or due to fulltime work commitments where individuals work outside of the town and cannot supply us cover.

On-Call Recruitment

As the Availability tables show, crewing of appliances during the day falls below our ideal expectation of 100%. We continue to strive and improve on the number of personnel at each station through our recruitment process so as we can increase the number of hours our appliances are available for emergency calls. The local appliances are only available to attend calls due to the commitment given by those who live and work within your community, without those in the community coming forward your appliance will not be available. If you are able to give some of your time or know someone who may be interested in joining our 'On-call' teams then why not pop into one of the stations on a. Crews are not volunteers but

are paid a salary to train and respond to emergency calls. If you are (or do know a person) who may be interested in joining our team why not pop in for a chat on a Monday evening between 7pm and 9pm with the local crew members or, you can get details of how to join our team on our website www.dwfire.org.uk . Alternatively, you can contact us on our Recruitment hotline 01722 691444

Recent Notable Incidents

The Novichok incident at Amesbury attracted National and International interest and the Service was heavily involved in supplying a response to support the ongoing investigation. Crews from all over the Service assisted in this and Cricklade Fire Station was part of this response.



Both Cricklade and RWB attended a multi pump fire at the One Stop Shop in Pinehurst Swindon along with a number of field fires which have required the attendance of 2 or more fire appliances





Community Safety Plan

Our Community Safety Plan is our vision until 2020 and can be found on the DWFRS website; <http://www.dwfire.org.uk/community-safety-plan/>

Matty Maggs

Station Manager Westlea, Cricklade and RWB

Email: Matthew.maggs@dwfire.org.uk

Tel: 01722 691173 | Mobile: 07595 966708

September 2018

The right healthcare, for you, with you, near you

NHS Wiltshire Clinical Commissioning Group (CCG) is responsible for commissioning a broad range of healthcare for the population of Wiltshire. We are led by experienced local GPs drawn from across the county, who provide clear clinical leadership to the big decisions affecting the future of healthcare provision in Wiltshire, carefully tailored to meet the differing needs of people locally.

Our vision is to ensure the provision of a health service which is high quality, effective, clinically-led and local. We are committed to delivering healthcare that meets the needs of Wiltshire people, to consult and engage with our population to enable them to be involved in decisions made about health services and to deliver those services to people in their own homes or as close to home as possible.

News

Free online patient education videos!



We have added an online library of [free patient education videos for Wiltshire patients on our website](#), to provide support and expert information on managing six long term health conditions.

The Sound Doctor library contains around 300 short, concise videos covering:

- Diabetes
- Heart Failure
- Chronic Obstructive Pulmonary Disease (COPD)
- Dementia
- Back Pain
- Weight Management Surgery

The video contents were co-produced with clinical experts in their field and disease specific charities, e.g. Alzheimer’s Society, British Lung Foundation, & British Heart Foundation. All of the material adheres to National Institute for Care and Excellence (NICE) guidelines.

Sound Doctor videos provide patients access to expert advice from the comfort of their own homes, or on the move via Smartphones or tablets.

Access the Sound Doctor is via the [Wiltshire CCG website](#). Users are asked to confirm their GP surgery and provide their Wiltshire postcode in order to get instant, free access to the online video library.

Sustainability and Transformation Partnership update

Click on the image to read the latest newsletter.



News archive

Read more news from Wiltshire CCG in our [news archive](#).

Have your say on contracting arrangements for Integrated Care Providers

NHS England is consulting with stakeholders and the public on the contracting arrangements for Integrated Care Providers (ICPs) and runs until 26 October 2018.



[Visit the NHS England website to find out more and have your say.](#)

The consultation provides more detail about how the proposed ICP Contract would underpin integration between services, how it differs from existing NHS contracts, and how ICPs fit into the broader commissioning system.

There is widespread support for ending the fragmented way that care has been provided to improve services for patients and the NHS has been working towards this in a number of ways. ICPs are one of these ways, and are intended to allow health and care organisations to be funded to provide services for a local population in a coordinated way.

NHS England is also running [engagement events](#) during the consultation period to provide further opportunities for stakeholders and the public to share their views.

If you have any questions or other enquiries about the consultation, you can email NHSE England at england.icpconsultation@nhs.net.

Help shape and improve the future delivery of the child immunisation service in Wiltshire

Parents and carers are invited to express their views and opinions about children's immunisations at one of three focus groups taking place across Wiltshire.



It is important children receive the best start in life. Parents are being encouraged to protect their families by ensuring their children receive the right vaccines at the right time.

This is an important opportunity to share your opinions, experiences such as the challenges you may have faced, and ideas and suggestions you may have to help shape and improve the future delivery of the child immunisation service.

Focus groups will take place:

- 26 September 2018 in Calne 10am-1pm
- 27 September 2018 in Salisbury 10am-1pm
- 4 October 2018 in Trowbridge 10am-1pm

Please note that places are limited and booking closes on 23 September 2018.

[Find out more by reading this flyer.](#)

OTC – easy as 1 2 3

Wiltshire Clinical Commissioning Group (CCG) is following new guidance set out by NHS England in March 2018, meaning that for 35 minor, short-term conditions, medicines that are available over the counter will no longer routinely be prescribed.

Medicines under the guidance include treatments for coughs, colds, dandruff, mild cystitis, nappy rash, warts and verrucae, ear wax, head lice and mild dry skin.

A full list of conditions is available www.wiltshireccg@nhs.uk/over-the-counter

This means that some patients who contact their GP Practice to make an appointment regarding any of the 35 conditions may be advised by the receptionist to seek advice from a pharmacist instead. There are certain scenarios where certain patients should continue to have their treatments prescribed.

To find out more visit www.wiltshireccg@nhs.uk/over-the-counter

OTC - easy as 1 2 3

- 1 Advice** - think 'pharmacy first'
Your local pharmacist is an expert in medicine. They can advise you about common ailments and provide over the counter medicines
- 2 Accessible**- the high street can help
You can buy a variety of affordable over the counter medicines from pharmacists, local shops and the high street
- 3 As good as prescribed!**
Many over the counter medicines are the same as those your GP can prescribe

Do you follow us?

[Back to top](#)

Keep up to date with news and information from Wiltshire CCG on social media.

**NHS Wiltshire CCG****@NHSWiltshireCCG**

Area Board Update

September 2018

Mental Health Priority Survey

Earlier this year we asked local people what they thought our priorities should be for the year ahead. Mental health was chosen by many people as a key area we should be focussing on.

We would now like to know what you think are the key issues within mental health so that we can focus our work.

Take part in the survey:
www.surveymonkey.co.uk/r/HealthwatchWiltshire-MentalHealthPriorities



New report!

Healthwatch Wiltshire has been gathering the views of local people on a new vision for health and care services in the county.

We spoke to 117 people about the new proposed vision statement being put forward by the Wiltshire Health and Wellbeing Board, which brings together local authorities, the NHS, public health and adult and children's services in a shared vision for the future.

The vision aims for everyone in the county to be empowered to lead happy, healthy and fulfilling lives and tackle the inequalities in health.

We found that most local people supported the vision, however almost a quarter of those interviewed didn't, and this was because they thought it was 'just words' or due to poor experience of health and care services. Most felt it was a good aspiration to lead a healthy life.

The full report can be viewed here: healthwatchwiltshire.co.uk/reports



Update for Royal Wootton Bassett & Cricklade Area Board

Update from	Royal Wootton Bassett Town Council
Date of Area Board Meeting	26 Sept 2018

Headlines/Key Issues

- An appeal against Wiltshire Council's decision to refuse the planning application for a significant housing and commercial development to the North of RWB was started on 18th September. However, this appeal was adjourned by the Inspector until 3rd December to allow the developers, Leda Properties/Tesco Stores Ltd/Lidl GmbH, to provide an assessment of the drainage issues that had previously be raised by the RWB Town Council and residents. The Town Council remains opposed to this development and the recently adopted RWB Neighbourhood plan confirmed that RWB has met its statutory required Housing quota up to 2026.

- The Town Council has organised a Public Meeting on 25th September to discuss the next steps for the Forever Stone Poppy, which collapsed under its own weight earlier this year. We expect that this meeting will be very well attended based on feedback from the RWB community.

- The Salvation Army Housing Association (SAHA) has now applied for planning permission for its Marlborough Road development. RWB TC planning committee called in the application and the associated meeting was attended by a number of interested residents. The RWB Planning Committee registered its opposition to this development highlighting that RWB has met its housing quota and that the site may not be the most suitable location for such a large number of social housing units.

- The new RWB Town Council website has been launched. Please take time to visit us at www.woottonbassett.gov.uk

- RWB will host its annual Town Crier competition on 22nd September. Our resident Crier, Owen Collier, will host a number of competitors and we expect a good turn out for this popular event.
- RWB Civic Service will be held on 28th October 2018 at 3.00pm. The Mayor, Cllr Mike Farrow, welcomes residents from RWB and surrounding areas to this event.

Update for Royal Wootton Bassett & Cricklade Area Board

Update from	Cricklade Town Council
Date of Area Board Meeting	24 September 2018

Headlines/Key Issues

Cricklade Hare-itage is back!

Cricklade residents are happy to see the Cricklade Hare-itage Hare back on display outside the Council offices. Planning permission has been granted for it to be on display for 6 months a year



Parish Improvement Grant

Thank you to the Area Board for contributing to the resurfacing of Cric 81, a footpath from The Forty through to Pittsfield and the Town Centre. The work was completed in early September. The Council has received many thank you messages and positive comments from residents.



Update for Royal Wootton Bassett & Cricklade Area Board

Update from	Lydiard Millicent Parish Council
Date of Area Board Meeting	26 September 2018

Headlines/Key Issues

- Cricket Season has finished and Football Season has started

- New Swings are fitted in Play Area

- Councillors in the Community

Cricket Season has finished and Football Season has started

The Cricket Square was used this summer for the first time after many years of neglect. Originally it had been hoped that the square would be useable in the 2017 season, but sadly this was not possible. The square and outfield were prepared enough to be safe in this first year; a task made considerably more difficult because of the lovely weather we enjoyed! A decision as to the future of the square will be made very soon. If there are any Cricket Clubs looking for a grass wicket to play on please let the Parish Council know, it will help with the decision to know if there is still a demand for this facility.

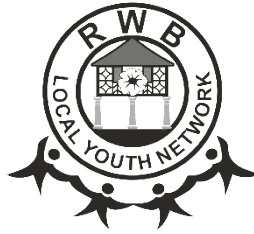
Lydiard Millicent Junior Football Club has been busy now that the football season is underway. Members have been marking out pitches and erecting goal posts, they have also contributed towards a new seating area, paying for one of the picnic tables. This contribution at the start of the season, by the Club saves the Council money, so thank you LMJFC!

New Swings are fitted in Play Area

Just last week the Council arranged for two sets of swings to be replaced in the Recreation Field play area. There are now two shiny new junior swings and two new shiny baby swings ready to be used.

Councillors in the Community

The August Council meeting was a field trip! Councillors and some residents all got into a mini bus to visit various sites around the parish. Other residents joined the group just for their particular area. Feedback so far from Councillors and Residents has been positive so will be repeated.



With and for, our young people.

August - September 2018

The Royal Wootton Bassett Local Youth Network has continued the pace of its work:

1. Developing and increasing involvement from its young people.
2. Extending its network of volunteers.
3. Obtaining greater understanding of the needs of our young people.
4. Securing and maintaining local free positive activities for young people.
5. Encouraging a change in perspectives about our young people.
6. Increasing public awareness with new logo, face book page, t-shirt, banners and PR.

The Committee is developing its understanding of the needs of our young people, in order to shape future provision. This is being achieved via the following means including:

- Desk based research
- High Street Surveying
- Royal Wootton Bassett Academy Open Evening surveying
- Royal Wootton Bassett Academy student survey
- Online survey, in association with GreenSquare Group

The Committee is active on an ongoing basis providing and developing *nil funded* activities as follows:

1. Bird Box Initiative
2. Rotary Youth Challenge Team
3. Music on your doorstep
4. Christmas Tree Craft / Craft Session
5. Christmas Lights
6. WBLOS / WBLETS Charity Pantomime Performance
7. RBL Project
8. Bassett In Bloom
9. Petenque
10. Letter befriending
11. LGBT initiative in association with Out of the Can

The Royal Wootton Bassett Local Youth Network would like to offer its thanks to the following who have provided great support: Wiltshire Council, Royal Wootton Bassett town Council, the Royal Wootton Bassett Shed, Wiltshire Wildlife Trust, Royal Wootton Bassett Academy, GreenSquare Group and the Rotary Club.

The Management Committee would like to thank all the stakeholders, young people and CMAS for their very much valued support to date.



Story Box

Share a fun, free, hands on five week course with your preschool child:

- Discover how play supports learning skills
- Bring your favourite story to life
- Create a story box to share together
- It's a chance for you to get back to learning too!

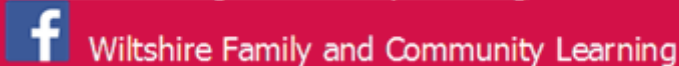
When: Starts Monday 15th October 1:00-2:30

Where: Royal Wootton Bassett Children's Centre, SN4 8BA

(The funding does not support paid carers of other children to attend, unless attending with their own child.)



www.wiltshire.gov.uk/family-learning



Wiltshire Council
Where everybody matters

Please call RWB Children's Centre 01793 851224 to reserve a place on the Story Box course with your preschool child, 15th October 1:00-2:30. Wiltshire Family and Community Learning will call you to tell you more about it. *If you have more than 5 GCSEs (grades A-C), the course may not be right for you. Service families welcome to join, also EU residents of more than three years.

ROYAL WOOTTON BASSETT ARTS FESTIVAL



AUTUMN CONCERT

“Celebrating St Cecilia”

in collaboration with

Royal Wootton Bassett Choral Society

Featuring instrumentalists from 2018
Festival Music and other guests

On Saturday NOVEMBER 17TH,

starting 7.30pm

At The Sacred Heart Church,

Royal Wootton Bassett

Retiring collection

Refreshments



COMMUNITY AREA TRANSPORT GROUP ACTION / NOTES LOG

**Royal Wootton Bassett and Cricklade Community Area Transport Group (CATG)
Notes from Meeting 12th September 2018. Cricklade Town Council offices.**

	Item	Update	Actions and recommendations	Who
1.	Attendees and apologies			
	<p><u>Present:</u> <u>Wiltshire Councillors:</u> Allison Bucknell, Mary Champion, Mollie Groom, Chris Hurst, Bob Jones, Jacqui Lay <u>Wiltshire Council officers:</u> Steve Hind, Martin Cook <u>Town and Parish Councillors:</u> Broad Town – Rupert Pearce Cricklade – John Coole Purton – Ray Thomas Tockenham – Diana Kirby</p>	<p><u>Apologies:</u> Guy Ricketts(Clyffe Pypard), Alexa Davies (Wiltshire Council), Mike Farrow (RWB Town Council)</p>		
2.	Notes of last meeting - June 6th 2018			
	See separate Note Tracker file			
3.	Top 5 Priority Schemes (A List)			
a)	<p><u>Issue 3629 - CRICKLADE</u> Cricklade, Chelworth Rd - speeding</p>	<p>12/9/2018 CATG update Traffic order is operational from 12th October. SH has requested that Ringway install the signs around a week before this date. SH will oversee the work. Look to close in December meeting.</p> <p>0606018 -SH - prep had been done and traffic order has gone to team for advertising, due imminently. Will receive objections and if none then work will go ahead with contractor. BJ commented in Cricklade there had been a new post when an old one could be used and raised concerns that this is a waste of</p>	<p>SH to oversee project. Look to close at December meeting.</p>	SH

COMMUNITY AREA TRANSPORT GROUP ACTION / NOTES LOG

		<p>money.</p> <p>070318 SH - Cricklade TC confirmed to go ahead with the 40mph extended back from the crossroads up Chelworth Road. WC to advertise the proposals for a new speed. If no objection then can go ahead. If any objections then have to address them.</p> <p>A proposal received from Cricklade TC, 40mph on the built up area for the western end of Chelworth Rd. This proposal is approved. Cost around 2.5k for advert and implementation.</p> <p>50% funding from Cricklade TC agreed 28/12/17</p> <p>Site visit undertaken to determine sign locations. To be advertised.</p>		
b)	<p>Issue 4458 – PURTON – Cricklade Rd</p> <p>Submitted 02/02/16</p> <p>Speeding Issue.Speed of traffic entering and leaving Purton at Widham by railway bridge.</p>	<p>12/9/2018 CATG update</p> <p>Following a site meeting with Bob Jones and Ray Thomas it was agreed not to progress the traffic calming scheme with build outs. The request was changed to consider an option to reduce traffic speed with an improvement to road markings. There is no injury collision issue at present and it is difficult to produce a scheme that will make any real difference. Further design work can be undertaken if approved at CATG. SH was requested to provide a table of what options have been considered and why they have been discounted. SH also to look at a review of signs and lining</p> <p>060618 SH - 21k cost estimated for the traffic calming project. To include traffic management and possible diversion. A metrocount might be required to monitor traffic speed. The build would have to be lit and consultation on this would be required.</p>	<p>SH – prepare list of what has been looked at so far</p> <p>SH – look at signs and refreshing and/or additional lining</p>	

COMMUNITY AREA TRANSPORT GROUP ACTION / NOTES LOG

		<p>RT to meet with BJ/RT and SH to discuss options. AB to move forwards as a substantive scheme if determined the best way forwards. £7k had been agreed as a contribution from Purton PC. CATG to make up the contribution to 50% of the balance</p> <p>070318 Meeting with SH and RT – request for a cost development for the scheme – Purton PC to put forward £7k – probably a substantive project as could be around £20k. if so then the cost would not come from CAT G budget. CAT G requesting for the costings and then make a decision in June. Discussed with Ray Thomas</p> <p>Futher consultation required from Purton PC</p>		
c)	<p>Issue 5892 - TOCKENHAM</p> <p>A3102 Tockenham</p>	<p>12/9/2018 CATG update Proposals for all improvement requests sent to Tockenham PC for approval and accepted. Tockenham PC have contributed £1500 towards a substantive bid together with the £10k from the CATG budget. Currently waiting results from the substantive bid assessment. If this is not successful then will need to bring a proposal back to CATG for delivering the project in phases</p> <p>060618 Rationalisation of signage was required at a cost estimate of £10k, including traffic management. Road markings refurbishment would be £3k, £15k cost estimate for build out at Trow Lane and a land survey would be required for this at c£1.5k. An additional £5k would be required for signing and road markings on the approaches to Trow Lane. It was commented illegal signage should be replaced at no cost to parish.</p>	<p>SH to monitor outcome of substantive bids If not successful then SH to propose phased works.</p>	SH

COMMUNITY AREA TRANSPORT GROUP ACTION / NOTES LOG

		<p>This could be done in blocks of work. However it was suggested that this goes forward as a substantive scheme due to the cost of the overall scheme and the benefit of the scheme being far wider than Tockenham Parish. DK to talk to Parish about a contribution towards the scheme and CATG suggested contribution of £10k towards substantive scheme.</p> <p>070318 SH and MC met with DK and other parish councillors. Feel there is something to be done but needs to develop a series of small projects to be priced up and then CAT G can decide how to go ahead. SH to let pc know when he has some schemes ready. Hopefully will having something ready for next meeting</p> <p>Site meeting undertaken with PC.</p> <p>Various concerns raised. It was agreed to develop several proposals with cost estimates to address these concerns, followed by prioritisation in conjunction with the PC.</p>		
d)	<p>Issue 5083 – PURTON Submitted 10/1/2017 Road priorities at Tadpole Lane, B4533 and the C70</p>	<p>12/9/2018 CATG update An experimental order to close access at junction would be around £9k for six months (£15k for 12 months, £21k for 18 months) and this would include water filled barrier maintained by Ringway, signing and notification process. There is great opposition from Cricklade for this proposal so is likely to cause a great deal of work if put out to consultation. It was also felt that this could be seen to be a waste of public money. SH to arrange to meet on site with JL/BJ/ CTC & PPC at 8.00am to see the traffic at peak period to see if there is any other option.</p>	<p>Onsite meeting to be arranged by SH</p> <p>Area Board to lobby Strategic Planning and Highways</p>	<p>SH /JL/BJ/CTC /PPC</p> <p>AB/JL</p>

COMMUNITY AREA TRANSPORT GROUP ACTION / NOTES LOG

		<p>SH to provide a list of what has been considered already and why it has been discounted.</p> <p>It was also suggested that the Area Board should lobby Strategic Planning/Highways for a wider review as these issues are caused by the expansion of Swindon.</p> <p>060618 BJ and Cho commented Cricklade TC were not supportive, while Purton PC and JL are supportive of a short-term trial. The objection to a trial from Cricklade TC was in terms of distance and whether related metrocounts had been taken, the route is part of national cycleway and issues relating to the railway. SH advised on process - an order was required (1k) and consideration as to how to barrier the route.</p> <p>070318 SH visited and feels there is no low cost option available. BJ reported several accidents again at the junction. SH and MC feels that an experimental one way order – no entry into Hayes Knoll or no entry either way. Both Purton Pc and Cricklade TC to be advised and for them to come back to say if they agree. Site visit undertaken.</p> <p>Low cost option not available. All options will require significant land acquisition.</p>		
4.	Substitute Priorities (B List)			
	<p>Issue 4567 – BROAD TOWN Submitted 29/03/16 Speeding Broad Town</p>	<p>12/9/2018 CATG update CATG can contribute to costs of installation of a SID but not the running of a scheme or training. Post sockets would be required as a SID should not be left in one location. Whilst the Area Board is minded to contribute to this, the Parish</p>	<p>Broad Town PC to look at management plan before funding can be agreed</p> <p>Move to A List for December</p>	<p>Broad Town PC</p>

COMMUNITY AREA TRANSPORT GROUP ACTION / NOTES LOG

		<p>Council would need to own and manage the SIDs so a management plan is required.</p> <p>060618 SB provided a detailed proposal for SIDs in the village with - a £450 contribution from the PC was proposed by the PC for a project costed at 6k. Discussions over whether we could support a bid for funding SIDs as the understanding was that SIDs should be owned by PC with WC agreeing siting.</p> <p>070318 SB – considering the SIDS at pc but these are not always effective but speed limit reminder signs may be a better option. Can be Solar Powdered. Would need two signs on posts – Parish Steward can put up and pc could pay for these. Other option put in marked parking bays to creating ‘mobile build outs’ . Looking at the Safe Routes to School policy as then can apply for other funding. Discussing this with DT and when BT pc have some schemes they are happy with then will come back to CAT G to look for financial support.</p> <p>Action is for BT to bring back a proposal to CAT G at the next meeting.</p> <p>07.12.17 - Dave Thomas had attempted to contact the PC to discuss this issue, however they had not got back to him. To be left on agenda for one next cycle.</p> <p>Broad Town PC considering SIDS.</p>		
--	--	--	--	--

COMMUNITY AREA TRANSPORT GROUP ACTION / NOTES LOG

		<p>SH had provided SID information to Broad Town PC. SH stated fixed SIDS were not effective, portable SIDS are preferred. WC policy is not to install permanently installed SIDS based on research. It was advised Broad Town identify a number of locations in each direction for potential SIDS and to move them about. This would need to be managed by the PC, so qualified manpower was required for a successful scheme. Posts could be put in place for SIDS to be fixed to.</p> <p>DT has tried to contact Broad Town PC and has not received a response.</p>		
	<p><u>Issue 4490 - PURTON</u></p> <p>Submitted 17/02/16</p> <p>Road calming required on Station Road in Purton</p>	<p>12/9/2018 CATG update Nothing to report – still waiting on outcome of 4458</p> <p>060618 RT - leave on the B List as is as affected by outcome of 4458 Widham Bridge potentially.</p> <p>Moved to B List March 2018 Scheme discussed at the PC meeting in January. Estimate approx. £14k. Ray Thomas confirmed Purton PC had budgeted to contribute £7k to the project.</p> <p>Purton PC to decide whether or not to continue.</p>		
	<p>Issue 4313 LYDIARD MILLICENT</p> <p>Submitted 30/10/2015?</p> <p>Traffic calming on bend near Old Chapel</p>	<p>12/9/2018 CATG update Nothing to report – wait to see if lineage at Widham Bridge helps with calming to consider for LM</p>		

COMMUNITY AREA TRANSPORT GROUP ACTION / NOTES LOG

	Issue 5269 RWB South Submitted 2/4/2017 Dangerous crossing at the New RoadStation Road junction	12/9/2018 CATG update Location does not meet pedestrian criteria for a formal crossing point. SH to provide details of footfall count and the criteria for formal crossings to Chris Hurst.	SH to provide details of footfall count and the criteria for formal crossings to Chris Hurst.	SH
	Issue 5915 Lydiard Millicent Submitted 5/12/2017 Road layout and verge erosion at the junction bottom	12/9/2018 CATG update No response from email sent to Dean Cobb requesting a discussion on site. MG informed the there is a new CATG rep – Phil Shepherd – and will provide his details to SH. 060618 DC circulated further information, including a map and suggestions. Moved to B List 060618 070318 LMPC have approved an initial £2,500.00 towards design and works to re-engineer this dangerous junction at the bottom of Stone Lane and Common Platt. Steve Hind at the last CATG meeting asked for LMPC Highways working group ideas to be sent to him to review, Alexa can confirm this Added to C List March 2018	MG to provide Phil Shepherd's details to SH SH to contact Phil Shepherd	MG SH
5.	Pending Priorities (C List) (Issues can be viewed in full from the Area Board Section on the Wiltshire Council Website)			
b)	Issue 5082 - PURTON Submitted 9/1/2017 Safety concerns at Purton village centre (this is NOT the triangle, this is by Redhouse)	12/9/18 – Purton PC has asked people to park at Redhouse and walk to school 19/6/2018 Ray Thomas pointed out that this issue has been confused with another older issues and would like CATG to consider the issues about crossing the road near the village centre NOT the triangle! Issue 3166 refers to the Triangle.		Leave

COMMUNITY AREA TRANSPORT GROUP ACTION / NOTES LOG

		<p>060618 No progress – RT leave on C List 070318 No action can be taken as will be looked at as part of planning application.</p> <p>RT and SH met. The Co-op scheme is purely lineage scheme. SH to write to the agent to find out frequency of deliveries etc. Still ongoing until we know what the Co-op is planning to whether they come to the village or not 06.12.17 - the Co-op have sent through some plans. The Co-op have informed SH they have no budget available. SH confirmed no S106 money was available. SH stated this issue is not a safety risk at present.</p>		
	<p>Issue 6289 PURTON Submitted 26/04/2018 Traffic Speed Buryhill Farm Braydon</p>	060618 Moved to C List	26/04/2018	
	<p>Issue 6186 PURTON Submitted 05/03/2018 Speeding past Pear Tree Purton</p>	060618 Moved to C List	05/03/2018	
6.	Metrocount Requests/CSW			
	Issue 6319 - Request from Clyffe Pypard to investigate new methods of speed control for villages	<p>12/9/2018 – Metrocount has been requested, awaiting results 06.06.18 - GR updated continuous complaints and a metrocount was requested. AB confirmed metrocounts and SIDs were the only agreed methods of speed monitoring.</p>		AD
	Issue 6263 – Speeding Bath Road RWB	<p>12/9/2018 – Metrocount has been requested, awaiting results Metrocount request 060618</p>		AD
7.	Outstanding Issues by Division			
6228	Speeding RWB A3102 opposite poppy RWB North	12/9/2018 – it is felt that there is nothing that can be done about this as it is due to bad driving . Close issue.		

COMMUNITY AREA TRANSPORT GROUP ACTION / NOTES LOG

		060618 sent to TC		
6149	Signage at Lydiard Millicent Lydiard Millicent	12/9/18 – no update from LMPC 060618 to be discussed with Parish Council		
6077	Common Platt Washpool traffic calming Lydiard Millicent	12/9/2018 – no update from LMPC 060618 to be discussed with Parish Council		
6075	Missing road sign B4553 Purton	12/9/2018 – this is all in hand. New signage is due to be installed as part of the work at Cowleaze. 060618 to be discussed at Parish Council		
6062	Issues at Sally Pussey RWB East - Lydiard Tregoz	12/9/2018 – the Parish Council does not support any further work to be carried out here and have asked for the issue to be closed. 060618 MG to contact Lydiard Tregoz Parish Council		CLOSE
		Please see Appendix A – new issues since June 2018.		
8.	Substantive Highways Scheme			
		12/9/2018 – Tockenham scheme was put forward and awaiting outcome Two possible schemes in the offing – Tockenham (5892) and Purton (4458)		
9.	Finance – CATG Budget and Pavement and Footway Improvement Scheme			
	BUDGET – please see appendix C			
10.	Other items			
	Commercial Sat Navs – JL	No progress		JL
	20mph repeaters - CTC	CTC has drawn up a scheme for extra repeaters to address speeding through the town. SH/MC informed that this would still need to be approved and prioritised by CATG even if CTC paying for it as officers have to approved the signage.	Cricklade TC to submit an issue (Post meeting – this has already been done – 6545)	CTC
	Pavements	Concerns raised over lack of clarity as to where we are with the	AB to check with officers	AB

COMMUNITY AREA TRANSPORT GROUP ACTION / NOTES LOG

		pavement repairs budget and whether or not we can use CATG or Area Board money to bring forward maintenance to pavements		
11.	Date of Next Meeting: Wednesday 5th December 2018			

1. Environmental & Community Implications

1.1. Environmental and community implications were considered by the CATG during their deliberations. The funding of projects will contribute to the continuance and/or improvement of environmental, social and community wellbeing in the community area, the extent and specifics of which will be dependent upon the individual project.

2. Financial Implications

2.1. All decisions must fall within the Highways funding allocated to Royal Wootton Bassett and Cricklade Area Board.

3. Legal Implications

3.1. There are no specific legal implications related to this report.

4. HR Implications

4.1. There are no specific HR implications related to this report.

5. Equality and Inclusion Implications

5.1 The schemes recommended to the Area Board will improve road safety for all users of the highway.

6. Safeguarding implications

COMMUNITY AREA TRANSPORT GROUP ACTION / NOTES LOG

Appendix A – new issues since June meeting.

Cricklade 6545	Speeding vehicles Calcutt Street	12/9/2018 – this relates to the request for additional repeater signs	Add to C List	
RWB South 6537	speeding traffic Marlborough Road by Brooklands	12/9/2018 – This can be addressed through CSW. Chris Hurst is dealing with this as casework	Close - Casework	CLOSE
Cricklade 6501	Stones Lane Junction Cricklade	12/9/2018 – correspondence has been sent to AD on this. MC has also provided update :- Wiltshire Council as highway authority doesn't consider there being any benefit of erecting Give Way signs in urban areas. It is possible to refresh the White Road Markings, I will endeavour to make representation with the contractor who will be attending Cricklade as part of patching work at Malmesbury Rd / High St. junction on 19th September 2018.		
Purton 6473	Pavenhill -Speeding Cars approaching a concealed junction	Parish Council supports this issue	Move to C list	
Tockenham 6470	CATG speeding vehicals down Trow Lane SN15 4DL	Request was for signs warning about horses. Parish Council's view is that people driving on country lanes should expect horses and people in	Close	CLOSE

COMMUNITY AREA TRANSPORT GROUP ACTION / NOTES LOG

		the road and would not support additional signage.		
Purton 6455	20mph request Hyde Purton	Parish Council does not support this request	close	CLOSE
Lydiard Millicent 6430	Speeding Hook Street	Parish Council to discuss	Send to Parish Council	
Purton 6403	Path outside peartree close Purton	This has been fixed by the Developer	Close	CLOSE
Purton 6657	Car Parking in Bus Stop Purton	Parish Council support	Move to C list	
Purton 6656	metro count request The Fox	Parish Council support	Metrocount request	AD
RWB South 6649	Speeding Traffic Station Road	Chris Hurst will speak to RWB Town Council about it	RWBTC to review	CH
RWB South 6642	Cars not stopping at Zebra Crossing on Station Road	Chris Hurst will speak to RWB Town Council	RWBTC to review	CH
Clyffe Pypard 6636	Request for new sign Barton Clyffe Pypard	Parish Council support – add to C List	Move to C List	

COMMUNITY AREA TRANSPORT GROUP ACTION / NOTES LOG

Appendix B
Completed Issues – September 2018
NONE

COMMUNITY AREA TRANSPORT GROUP ACTION / NOTES LOG

Appendix C - CATG Budget 2018/19

Wootton Bassett & Cricklade CATG

FINANCIAL SUMMARY SEPTEMBER 2018

BUDGET 2018-19

£14,205.00 CATG ALLOCATION 2018-19

£28,923.00 2017-18 underspend

Contributions

£2,500.00 Cricklade TC for Chelworth Road hgv signing
 £1,000.00 Purton PC for Widham Bridge
 £1,250.00 Cricklade TC for Chelworth Road speed limit
 £2,500.00 Bradenstoke PC for B4069 resigning

Total Budget

£50,378.00

Commitments from previous years

Cricklade chelworth road speed limit ammendment 2500 Estimate. PC contribution 50% £1250
 Purton Widham bridge traffic calming 4000 Estimate. PC contribution £1000
 Purton Station Road parking bays 0 Estimate.
 Bradenstoke junction with B4069 resigning and roundels 8400 estimate. PC contribution £2500
 A3102 Tockenham proposals 10000 Contribution to substantive bid
 Purton, Crosslanes Junction 9000

Total **£33,900.00**

Remaining Budget **£16,478.00**

Ref	FOOTPATH LMIL70 PROJECT. Ref HWG 1/Spec
Issue	SPECIFICATION Issue 4.1 28th March 2018
Author	Cllr P Shepherd

LYDIARD MILLICENT PARISH COUNCIL HIGHWAYS WORKING GROUP



FOOTPATH LMIL70 REGENERATION. PROJECT SPECIFICATION AND CHANGE CONTROL

Issue 4.1 28th March 2018.

**This issue 4.1 is the PROPOSAL
for the Council meeting on 5th April 2018**

1. AUTHORITY

- 1.1 DECISION: Proposal Paper accepted by LMPC 1st February 2018.
- 1.2 CHANGE CONTROL: Highways Working Group and full Council as appropriate
- 1.3 SPECIFICATION: shared with WC Senior Rights of Way Warden at a site meeting on 26th February 2018 (DB and PS). WC to be sent all future issues of this specification.

2. OBJECTIVES

The objectives of this project are to:

- Bring the footpath back to a satisfactory condition for use by the general public allowing access to The Street from the Right of Way LMIL70 that runs all the way from Lydiard Park;
- Provide an alternative safe walking route from The Sun Inn car park to The Street in the direction of the church without the need to cross The Street twice or without the need to cross private land at the Sun Inn or the garages; and
- Regenerate to a standard where it is likely to remain useable with heavier utilisation and in poor weather.

3. SPECIFICATION

3.1 WRITTEN SPECIFICATION

- i) Restore the path to a useable condition.
- ii) Prepare ground to suitable levels and remove material as necessary,
- iii) Place geotextile to a width of 1200mm and a depth of at least 150mm type 1 or scalplings and compacted as necessary. Two bids for pathway material are required: one for type 1 or scalplings and a second alternative bid for road planings (the latter is a WC recommendation).
- iv) Use larch edging to retain pathway materials as necessary.
- v) Remove the stile at the Sun Inn end of the pathway (as recommended by WC). This will allow easy access for pushchairs. Retain fencing.

Ref	FOOTPATH LMIL70 PROJECT. Ref HWG 1/Spec
Issue	SPECIFICATION Issue 4.1 28th March 2018
Author	Cllr P Shepherd

- vi) Heavy overhead tree growth at the Sun Inn end of the path shown in illustrations 9a and 9b. It is planned for this tree growth to be retained as a feature on the footpath. The centreline of the footpath can be moved to one side to provide adequate head clearance for walkers.
- vii) Cut back brambles in the field that are shown in illustration 5. Consultation with landowner is required as to the agreed extent of cut-back of this vegetation in the field. **Action: DB**
- viii) Provide lapped timber fence in the area shown by the green lines in illustration 4 to be fixed between the existing concrete posts. Height to fence to match adjacent timber fence.
- ix) Provide white painted line to highway standard at edge of garage properties as indicated in illustration 3.
- x) Provide white markings to show commercial tenants the limits of the public right of way as shown in illustrations 8. (The previous specification of fencing here is not recommended by WC)
- xi) Provide new pedestrian lockable gates, one between pub car park and the field (orange arrow in 3.2 below) and one between the path and the field (purple arrow in 3.2 below)
- xii) Provide new right of way signs (3 in total). These are free of charge from WC. Later and in addition we may apply additional information signs that include the new parish logo to show the parish's commitment to maintaining the path.

3.2 ILLUSTRATIONS FOR SPECIFICATION

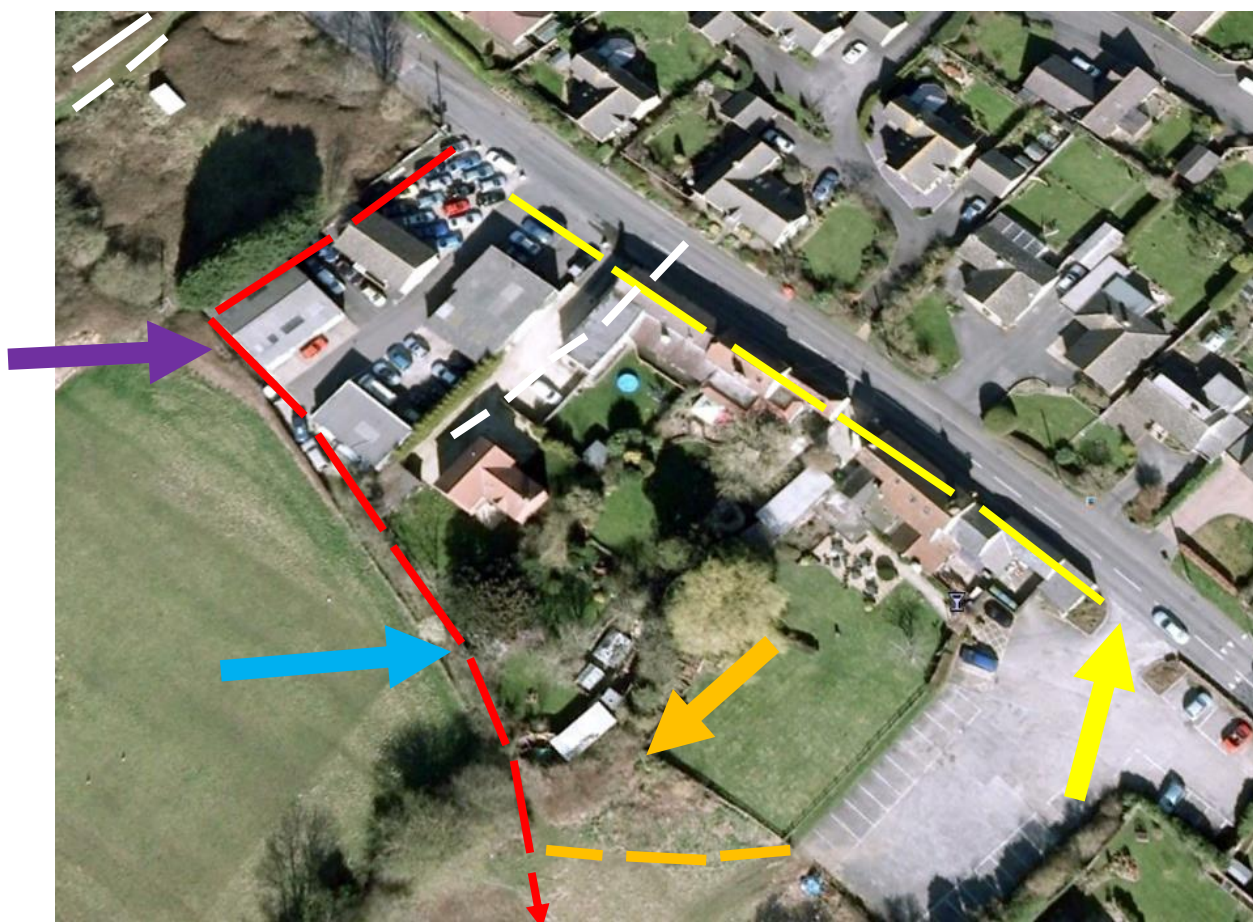


Illustration 1. Pathway layout with key to symbols in the table below

Ref	FOOTPATH LMIL70 PROJECT. Ref HWG 1/Spec
Issue	SPECIFICATION Issue 4.1 28th March 2018
Author	Cllr P Shepherd

Red dashed line	Wiltshire Footpath LMIL70 from the field behind The Sun Inn to The Street. The red dashed line at the bottom of the picture indicates the direction of the Right of Way to Lydiard Park
Yellow dashed line	South side of The Street with no footpath and so unsuitable for pedestrians
White dashed line	Unauthorised route taken by walkers through garage properties owing to footpath being blocked
Yellow arrow	Existing informal pedestrian crossing point from The Sun Inn car park; hazardous for most parts of the day
Orange arrow	New lockable pedestrian gate from pub car park to field
Orange dashed line	Informal access from pub car park to the Right of Way (red dashed line)
Blue arrow	The location of low overhanging tree growth (see illustration 9)
Purple arrow	New lockable pedestrian gate from path to field



Illustration 2: Wiltshire Council Public Rights of Way map for footpath LMIL70 (© WC)

Ref	FOOTPATH LMIL70 PROJECT. Ref HWG 1/Spec
Issue	SPECIFICATION Issue 4.1 28th March 2018
Author	Cllr P Shepherd



Illustration 3: White line to help maintain the right of way limits. Path width determined by timber fence behind the white caravan.



Illustration 4: Cut back corner to original concrete posts to provide more space for walkers as indicated by green lines



Illustration 5: Remove rotten corner post and other timber posts and re-use existing concrete posts.

Ref	FOOTPATH LMIL70 PROJECT. Ref HWG 1/Spec
Issue	SPECIFICATION Issue 4.1 28th March 2018
Author	Cllr P Shepherd



Illustrations 6 and 7: Obstructions to be moved (some already gone as at January 18)



Illustration 8: White line to help car sales tenant see and maintain the right of way limits or boundary marked by larch edging as recommended by WC Senior Rights of Way Warden

Ref	FOOTPATH LMIL70 PROJECT. Ref HWG 1/Spec
Issue	SPECIFICATION Issue 4.1 28th March 2018
Author	Cllr P Shepherd



Illustrations 9a and 9b: Overhead tree growth to be cut out.
Shown looking from each direction.
The tree is at head height of about 69" (1.75m) at the centre of the path

Ref	FOOTPATH LMIL70 PROJECT. Ref HWG 1/Spec
Issue	SPECIFICATION Issue 4.1 28th March 2018
Author	Cllr P Shepherd



Illustrations 10, 11 and 12

provided by WC Senior Rights of Way Warden after site meeting with Parish Clerk on 5th December 2017 showing the debris to be cleared by adjacent tenants

4. CHANGE CONTROL

In this section we record feedback received about the project specification and also record the outcomes and decisions.

4.1 Feedback from Howard, landlord of The Sun Inn.

PS had a discussion with Howard on 3 Feb 18 having learnt from Andre that Howard would like to provide some feedback. Howard made the following points to me:

- He supports the plan to regenerate the footpath.
- He continues to allow parents of schoolchildren to use the pub car park and that is not planned to change.
- He has a concern that the access to the right of way from the car park might become a right of way because of regular public usage, but does not object to the ongoing informal access of the footpath from the car park. (Note that Howard rents the field from his pub owners)

Comment from PS: Howard's feedback is noted and accepted. The right of way that runs all the way from Lydiard Park has no proper end point into The Street unless the pathway is regenerated. At present walkers are forced to walk over private property either at the pub or at the garages to find their way on to or from The Street and this cannot be right. Nevertheless Howard is happy that the route is seen informally as an alternative route to school. He has a concern on behalf of his landlord, who owns the field, that the small section between the pub car park (see orange dashed line in illustration 1) and the right of way (red dashed line) could itself become a right of way due to regular public usage. However, the council is advised that

Ref	FOOTPATH LMIL70 PROJECT. Ref HWG 1/Spec
Issue	SPECIFICATION Issue 4.1 28th March 2018
Author	Cllr P Shepherd

this unlikely scenario can be avoided by legal closure of that part of the proposed path on one day each year under the provisions of Dedicating the Way. Note: from personal local knowledge this route (marked by orange dashed line in 3.2) has been regularly used by walkers for at least 25 years.

Circulated to HWG (date)	Comments received from HWG? Y/N	Project specification change approved by HWG Chair (Y/N date)	Does this need to be approved by full council?
3 Feb 18	No	Yes by virtue of No Comment by 16 Feb 18	No

4.2 As a gesture of goodwill to adjacent landowners, metal lockable pedestrian gates are to be installed at locations shown by orange and purple arrows in 3.2 above. The first is at the boundary of the pub car park and the adjacent field (the pub and field are owned by the same company) and will replace a life-expired stile. This has been discussed with the pub landlord who will confer with his landlord and revert **Action: PS.** The second will replace “unofficial” access equipment (shown in illustration 10a) that is used by a tenant of the adjacent field in order to access the field and care for horses. This is to be discussed with the landowner **Action: DB.** Note that the provision of these gates was discussed with WC at the site meeting of 26th February and agreed to be a suitable course of action having regard to the various pathway design issues.

Circulated to HWG (date)	Comments received from HWG? Y/N	Project specification change approved by HWG Chair (Y/N date)	Does this need to be approved by full council?
27 Feb 18	Yes	Yes 27 th March 18	Yes on 5 th April 2018

APPENDIX (Paraphrased extract from The Arboricultural Association text)

The ‘Bird Nesting Season’ is officially from February until August (Natural England) and it is recommended that vegetation works (tree or hedge cutting) or site clearance should be done outside of the nesting season. The busiest time for nesting birds is from 1st March until 31st July and of course varies according to species, etc.

Contractors must aim to avoid impact to nesting birds and infringement of the *Wildlife and Countryside Act 1981* and breaching the *European Habitats Directive 1992/Nesting Birds Directive*.

When tree or vegetation clearance work has to be undertaken during the nesting season, a pre works survey needs to be carried out by a suitably competent person. As a general rule, it should be assumed that birds will be nesting in trees, and it is down to that person to assess, record and confirm that any works carried out in the management of trees and other vegetation has not disturbed actively nesting birds.